

Anchorage (66") / Open House (54") 2335/2334

Cumin 2050

Specifications

Contents

35% post-consumer recycled polyester
65% pre-consumer recycled polyester

Weight

2334 - 13.1 ± 1.0 oz./lin. yd.
2335 - 15.0 ± 1.0 oz./lin. yd.

Width

2334 - 54" min. useable
2335 - 66" min. useable

Repeat

none

Treatment

none

Backing

none

Cleaning Code

Standard Care Label W-S. Clean with water based cleaning agents, foam or pure, water free solvents. Vacuuming or light brushing is recommended to prevent dust and soil buildup.

Performance



Breaking Strength (ASTM D5034)

275 lbf min. warp and fill

Tear (ASTM D2261)

35 lbf min. warp and fill

Seam Slippage (ASTM D4034)

50 lbf min. warp and fill

Pilling resistance (ASTM D3511)

Class 4 min.

Colorfastness to light (AATCC 16 Option 3)

Grade 4 min. at 40 hours

Colorfastness to crocking (AATCC 8)

Grade 4 min. dry & Grade 3 min. wet

Colorfastness to water (AATCC 107)

Class 3 min. for staining
Class 4 min. for color change

Wyzenbeek Abrasion resistance (ASTM D4157)

250,000 double rubs min. cotton duck

Flammability

CA Technical Bulletin 117-2013 Section 1
NFPA 260/UFAC Fabric Classification - Class I
ASTM E84 Class I or A

Miscellaneous

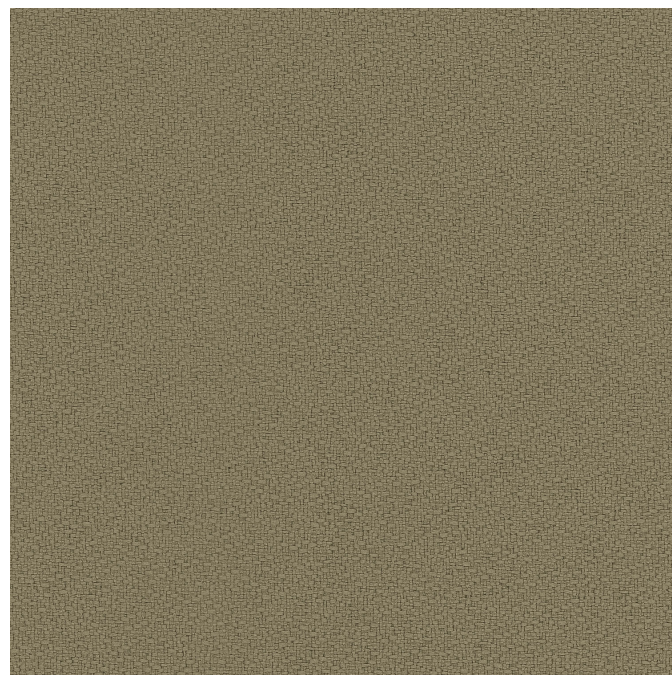
Every effort has been made to ensure color accuracy of the digital images, however, please order a sample before specification. Application testing of this product is recommended. This is a directional fabric. Open House 2334 carries a 10 year performance warranty when used as upholstery.

Please specify when ordering whether 54" or 66" width is needed. Dye lots may vary. Differences may also occur between corresponding colors of Anchorage 2335 and Open House 2334.

Proudly woven in North America supporting our local communities.

Multiple factors affect fabric durability and appearance retention, including end-user application and proper maintenance. Wyzenbeek results above 100,000 double rubs have not been shown to be an indicator of increased lifespan.

* White not recommended for use as Upholstery.



Terratek is a registered trademark of True Textiles, Inc. and designates fabrics that are made from 100% recycled or compostable material using increasingly sustainable manufacturing practices to produce a high quality product that is recyclable at the end of its useful life.



This pattern is included in the underwriters laboratory panel fabric recognition program. Additional testing of this U.L. recognized fabric is not required on approved panels from participating manufacturers.

NRC of anechoic termination

1.00

NRC of fabric in front of anechoic termination

.85

The plot below summarizes impedance tube measurements of absorption of an anechoic termination and various fabrics in front of the anechoic termination.

