

Couture 4858

Shears 1750

Specifications

Contents

57% post-consumer recycled polyester
25% pre-consumer recycled polyester
18% polyester

Weight

9.2 ± 1.0 oz./lin. yd.

Width

54" min. useable

Repeat

14.5" vertical, 14" horizontal

Treatment

stain repellent

Backing

acrylic backcoating

Treatment

stain repellent

Backing

acrylic backcoating

Cleaning Code

<p>Standard Care Label W-S. Clean with water based cleaning agents, foam or pure, water free solvents. Vacuuming or light brushing is recommended to prevent dust and soil buildup. May also be disinfected with hydrogen peroxide, alcohol, and quaternary ammonium (quat) based cleaners.</p>

Performance



Breaking Strength (ASTM D5034)

115 lbf min. warp and 85 lbf min. fill

Tear (ASTM D2261)

25 lbf min. warp and 30 lbf min. fill

Seam Slippage (ASTM D4034)

55 lbf warp and 60 lbf fill

Pilling resistance (ASTM D3511)

Class 5

Colorfastness to light (AATCC 16.3 Option 3)

Grade 4 min. at 40 hours

Colorfastness to crocking (AATCC 8)

Grade 4 min. dry & Grade 3 min. wet

Wyzenbeek Abrasion resistance (ASTM D4157)

100,000 double rubs cotton duck

Flammability

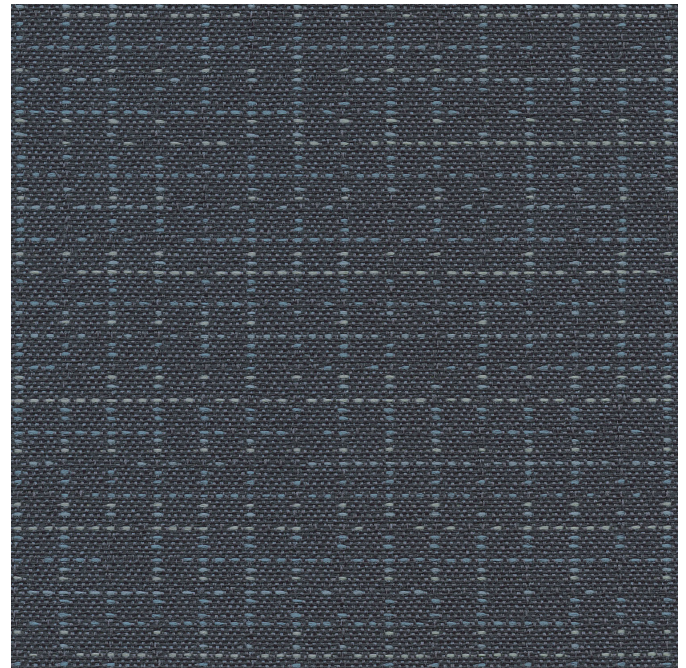
CA Technical Bulletin 117-2013 Section 1
ASTM E84

Miscellaneous

Every effort has been made to ensure color accuracy of the digital images, however, please order a sample before specification. Application testing of this product is recommended. Colors may vary between dye lots. This is a directional fabric.

Proudly woven in North America supporting our local communities.

Multiple factors affect fabric durability and appearance retention, including end-user application and proper maintenance. Wyzenbeek results above 100,000 double rubs have not been shown to be an indicator of increased lifespan.



This pattern is included in the underwriters laboratory panel fabric recognition program. Additional testing of this U.L. recognized fabric is not required on approved panels from participating manufacturers.

