

# Snakeskin 9000

Candy 6040

## Specifications

---

### Contents

53% pre-consumer recycled polyester  
47% post-consumer recycled polyester

### Weight

10.0 ± 0.5 oz./lin. yd.

### Width

54" min. useable

### Repeat

13.125" vertical, 14.5" horizontal

### Treatment

BLOCKaide® stain repellent

### Backing

none

### Treatment

BLOCKaide® stain repellent

## Cleaning Code

---

<p>Standard Care Label W-S. Clean with water based cleaning agents, foam or pure, water free solvents. Vacuuming or light brushing is recommended to prevent dust and soil buildup. May be cleaned with a 10% bleach-to-water solution. Rinse well after cleaning. May also be disinfected with hydrogen peroxide, alcohol, and quaternary ammonium (quat) based cleaners.&nbsp;&Read the&nbsp;&<a href="https://www.guilfordofmaine.com/system/res/28/original/Guilford\_of\_Maine\_-\_Cleaning\_\_Disinfection\_Handbook.pdf?1596642657" target="\_blank">Cleaning & Disinfection Handbook</a>.</p>

## Performance

---



### Breaking Strength (ASTM D5034)

175 lbf min. warp and fill

### Tear (ASTM D2261)

15 lbf min. warp and fill

### Seam Slippage (ASTM D4034)

60 lbf min. warp and fill

### Pilling resistance (ASTM D3511)

Class 4 min.

### Colorfastness to light (AATCC 16.3 Option 3)

Grade 4 min. at 40 hours

### Colorfastness to crocking (AATCC 8)

Grade 4 min. dry & Grade 3 min. wet

### Wyzenbeek Abrasion resistance (ASTM D4157)

60,000 double rubs min. cotton duck

### Flammability

CA Technical Bulletin 117-2013 Section 1

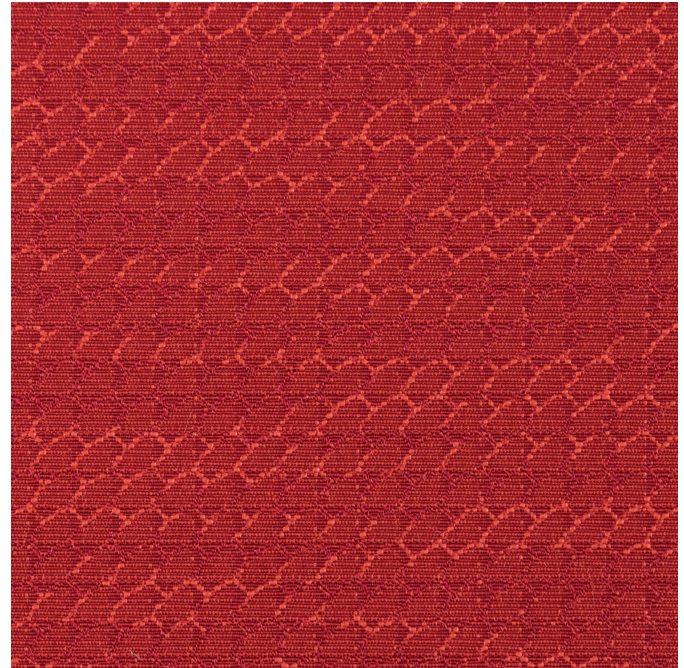
## Miscellaneous

---

Every effort has been made to ensure color accuracy of the digital images, however, please order a sample before specification. Application testing of this product is recommended. Colors may vary between dye lots. This is a directional fabric. Binder card not available.

Proudly woven in North America supporting our local communities.

Pre-Approved: Haworth, Kimball and Steelcase.



Terratex is a registered trademark of Duvaltex and designates fabrics that are made from 100% recycled or compostable material using increasingly sustainable manufacturing practices to produce a high quality product that is recyclable at the end of its useful life.