

Snakeskin 9000

Eucalyptus 6090

Specifications

Contents

53% pre-consumer recycled polyester
47% post-consumer recycled polyester

Weight

10.0 ± 0.5 oz./lin. yd.

Width

54" min. useable

Repeat

13.125" vertical, 14.5" horizontal

Treatment

BLOCKaide® stain repellent

Backing

none

Treatment

BLOCKaide® stain repellent

Cleaning Code

<p>Standard Care Label W-S. Clean with water based cleaning agents, foam or pure, water free solvents. Vacuuming or light brushing is recommended to prevent dust and soil buildup. May be cleaned with a 10% bleach-to-water solution. Rinse well after cleaning. May also be disinfected with hydrogen peroxide, alcohol, and quaternary ammonium (quat) based cleaners. &Read the &Cleaning & Disinfection Handbook.</p>

Performance



Breaking Strength (ASTM D5034)

175 lbf min. warp and fill

Tear (ASTM D2261)

15 lbf min. warp and fill

Seam Slippage (ASTM D4034)

60 lbf min. warp and fill

Pilling resistance (ASTM D3511)

Class 4 min.

Colorfastness to light (AATCC 16.3 Option 3)

Grade 4 min. at 40 hours

Colorfastness to crocking (AATCC 8)

Grade 4 min. dry & Grade 3 min. wet

Wyzenbeek Abrasion resistance (ASTM D4157)

60,000 double rubs min. cotton duck

Flammability

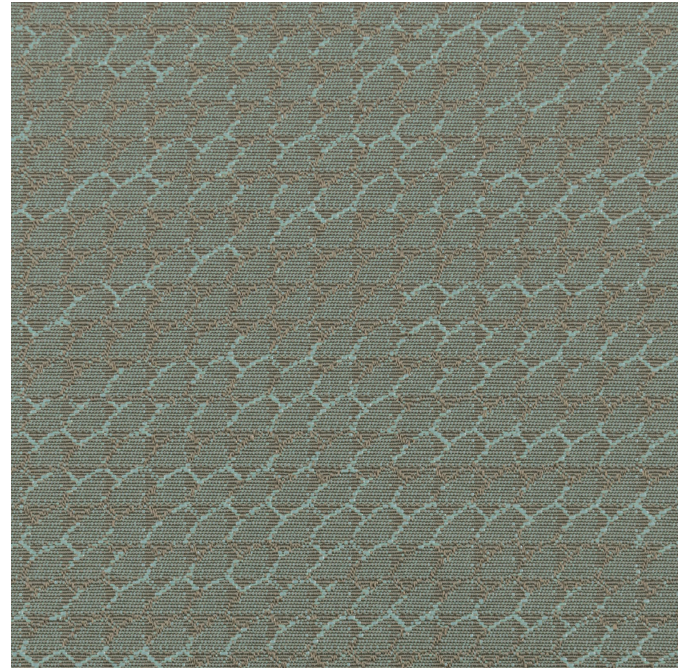
CA Technical Bulletin 117-2013 Section 1

Miscellaneous

Every effort has been made to ensure color accuracy of the digital images, however, please order a sample before specification. Application testing of this product is recommended. Colors may vary between dye lots. This is a directional fabric. Binder card not available.

Proudly woven in North America supporting our local communities.

Pre-Approved: Haworth, Kimball and Steelcase.



Terratec is a registered trademark of Duvaltex and designates fabrics that are made from 100% recycled or compostable material using increasingly sustainable manufacturing practices to produce a high quality product that is recyclable at the end of its useful life.



Guilford of Maine