

Twilight 9935

Lily Pad 5101

Specifications

Contents

65% post-consumer recycled polyester
18% pre-consumer recycled nylon
17% nylon

Weight

8.8 ± 1.0 oz./lin. yd.

Width

54" min. useable

Repeat

4.5" vertical and horizontal

Treatment

BLOCKaide® stain repellent

Backing

SBR backcoating

Treatment

BLOCKaide® stain repellent

Backing

SBR backcoating

Cleaning Code

<p>Standard Care Label W-S. Clean with water based cleaning agents, foam or pure, water free solvents. Vacuuming or light brushing is recommended to prevent dust and soil buildup. May be cleaned with a 10% bleach-to-water solution. Rinse well after cleaning. May also be disinfected with hydrogen peroxide, alcohol, and quaternary ammonium (quat) based cleaners. Read the Cleaning & Disinfection Handbook.</p>

Performance



Breaking Strength (ASTM D5034)

175 lbf min. warp and 130 lbf min. fill

Tear (ASTM D2261)

10 lbf min. warp and fill

Seam Slippage (ASTM D4034)

55 lbf min. warp and 40 lbf min. fill

Pilling resistance (ASTM D3511)

Class 4 min.

Colorfastness to light (AATCC 16.3 Option 3)

Grade 4 min. at 40 hours

Colorfastness to crocking (AATCC 8)

Grade 4 min. dry & Grade 3 min. wet

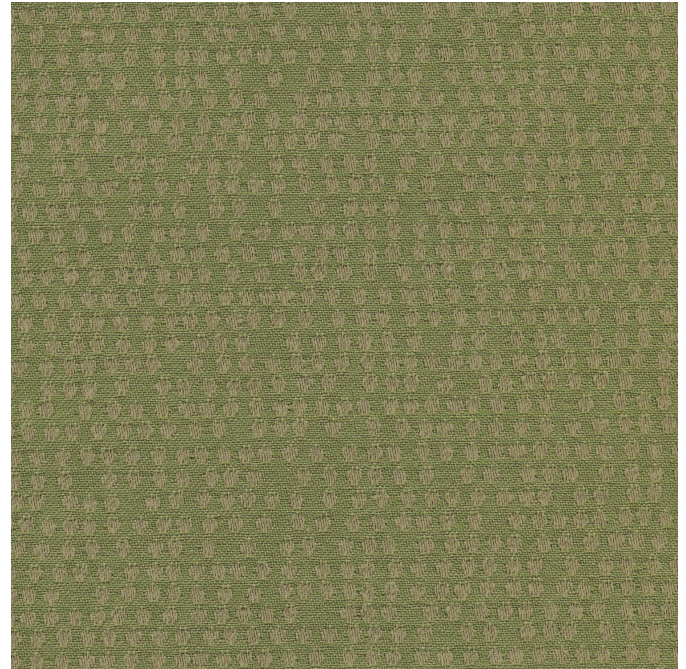
Wyzenbeek Abrasion resistance (ASTM D4157)

50,000 double rubs min. cotton duck

Miscellaneous

Every effort has been made to ensure color accuracy of the digital images, however, please order a sample before specification. Application testing of this product is recommended. Colors may vary between dye lots. This is a directional fabric.

Proudly woven in North America supporting our local communities.



Flammability

CA Technical Bulletin 117-2013 Section 1