

# Twilight 9935

Chartreuse 5160

## Specifications

---

### Contents

65% post-consumer recycled polyester  
18% pre-consumer recycled nylon  
17% nylon

### Weight

8.8 ± 1.0 oz./lin. yd.

### Width

54" min. useable

### Repeat

4.5" vertical and horizontal

### Treatment

BLOCKaide® stain repellent

### Backing

SBR backcoating

### Treatment

BLOCKaide® stain repellent

### Backing

SBR backcoating

## Cleaning Code

---

<p>Standard Care Label W-S. Clean with water based cleaning agents, foam or pure, water free solvents. Vacuuming or light brushing is recommended to prevent dust and soil buildup. May be cleaned with a 10% bleach-to-water solution. Rinse well after cleaning. May also be disinfected with hydrogen peroxide, alcohol, and quaternary ammonium (quat) based cleaners.&nbsp;&nbsp;Read the&nbsp;&nbsp;<a href="https://www.guilfordofmaine.com/system/res/28/original/Guilford\_of\_Maine\_-\_Cleaning\_\_Disinfection\_Handbook.pdf?1596642657" target="\_blank">Cleaning & Disinfection Handbook</a></p>

## Performance

---



### Breaking Strength (ASTM D5034)

175 lbf min. warp and 130 lbf min. fill

### Tear (ASTM D2261)

10 lbf min. warp and fill

### Seam Slippage (ASTM D4034)

55 lbf min. warp and 40 lbf min. fill

### Pilling resistance (ASTM D3511)

Class 4 min.

### Colorfastness to light (AATCC 16.3 Option 3)

Grade 4 min. at 40 hours

### Colorfastness to crocking (AATCC 8)

Grade 4 min. dry & Grade 3 min. wet

### Wyzenbeek Abrasion resistance (ASTM D4157)

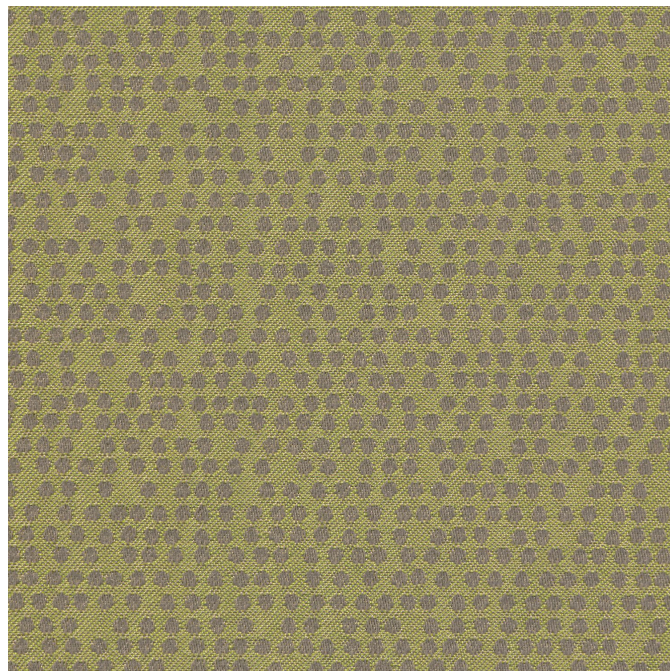
50,000 double rubs min. cotton duck

## Miscellaneous

---

Every effort has been made to ensure color accuracy of the digital images, however, please order a sample before specification. Application testing of this product is recommended. Colors may vary between dye lots. This is a directional fabric.

Proudly woven in North America supporting our local communities.



**Flammability**

CA Technical Bulletin 117-2013 Section 1