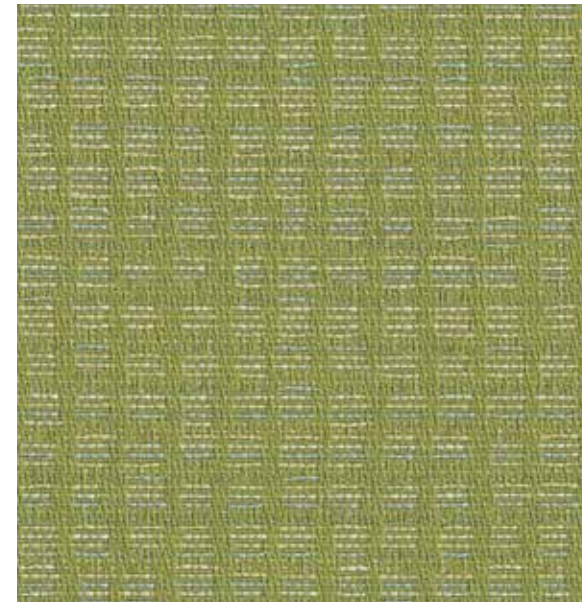
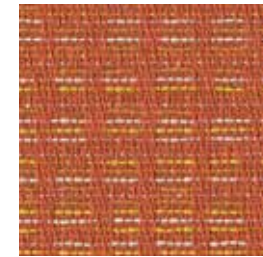


Instant 5585

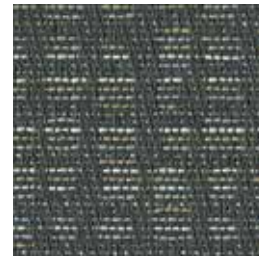
Instant 5585



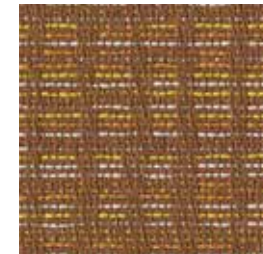
Lawn
357



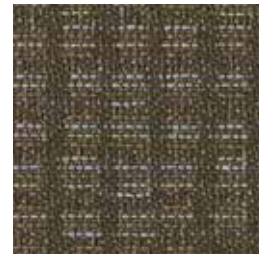
Tangelo
362



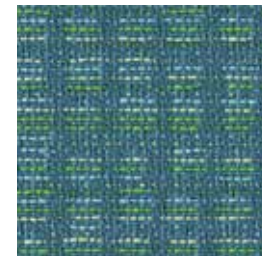
Granite
351



Ginger
359



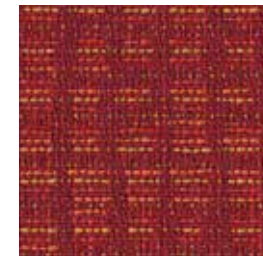
Thyme
353



Surf
356



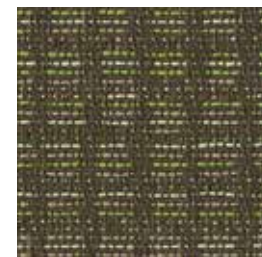
Bluebell
355



Poppy
361



Merlot
360



Moss
358



Deep Sea
352



Sienna
363



Galaxy
354

Specifications

Content	64% post-consumer recycled polyester 36% antimony-free polyester
Weight	14.5 ± 1.5 oz./lin. yd.
Width	54" min. useable
Repeat	11.6" vertical 13.5" horizontal
Backing	Crypton Green moisture barrier
Treatment	Crypton Green stain resistance Crypton Green odor resistance

Cleaning Code

Standard Care Label W-S. Clean with water based cleaning agents, foam or pure, water free solvents. Vacuuming or light brushing is recommended to prevent dust and soil buildup. May also be disinfected with hydrogen peroxide, alcohol, and quaternary ammonium (quat) based cleaners.


Miscellaneous


Proudly woven in North America supporting our local communities.


Application testing of this product is recommended. Colors may vary between dye lots. This is a directional fabric.

Visit guilfordofmaine.com for samples.

Performance


-  Colorfastness to Light (AATCC 16.3 Option 3)
Grade 4 min. at 40 hours


-  Colorfastness to Crocking (AATCC 8)
Grade 4 min. dry & Grade 3 min. wet

-  Breaking Strength (ASTM D5034)
190 lbf warp and 155 lbf fill

- Seam Slippage (ASTM D4034)
70 lbf warp and 90 lbf fill

- Pilling Resistance (ASTM D3511)
Class 4 min.

-  Flammability
CA Technical Bulletin 117-2013 Section 1

-  Abrasion (ASTM D4157)
100,000 double rubs cotton duck

*Certification Marks owned by the Association for Contract Textiles, Inc.