

Lexicon 9534

UPHOLSTERY

UPHOLSTERY

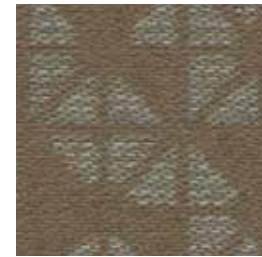
Lexicon 9534



Teal
5021



Cornsilk
5010



Tan
5040



Slate
5020



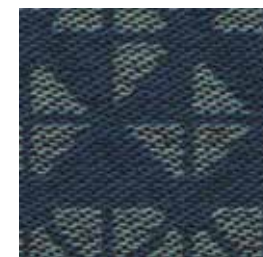
Pewter
5050



Apricot
5011



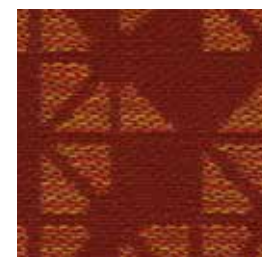
Ivy
5051



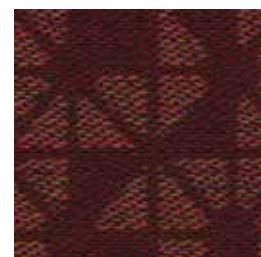
Admiral
5060



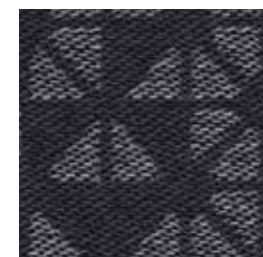
Graphite
5063



Scarlet
5030

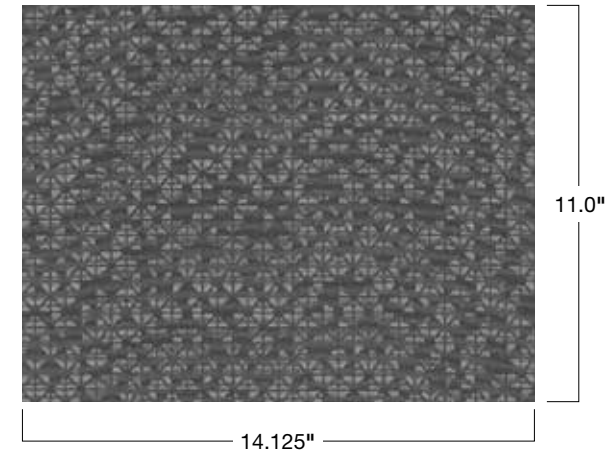


Cranberry
5062



Midnight
5061

Pattern



Specifications


Content	100% post-consumer recycled polyester
Weight	9.5 ± 1.0 oz./lin. yd.
Width	54" min. useable
Repeat	11" vertical 14.125" horizontal
Backing	acrylic backcoating
Treatment	BLOCKaide® stain repellent


Cleaning Code


Standard Care Label W-S. Clean with water based cleaning agents, foam or pure, water free solvents. Vacuuming or light brushing is recommended to prevent dust and soil buildup.

Bleach Cleanable - May be cleaned with a 10% bleach-to-water solution. Rinse well after cleaning. May also be disinfected with hydrogen peroxide, alcohol, and quaternary ammonium (quat) based cleaners.


Performance


-  Colorfastness to Light (AATCC 16.3 Option 3)
Grade 4 min. at 40 hours

-  Colorfastness to Crocking (AATCC 8)
Grade 4 min. dry & Grade 3 min. wet

-  Breaking Strength (ASTM D5034)
150 lbf warp and 135 lbf fill
- Seam Slippage (ASTM D4034)
60 lbf warp and 60 lbf fill

- Pilling Resistance (ASTM D3511)
Class 4 min.

-  Flammability
CA Technical Bulletin 117-2013 Section 1

-  Abrasion (ASTM D4157)
100,000 double rubs cotton duck

Sustainability



*Certification Marks owned by the Association for Contract Textiles, Inc.

Miscellaneous

Proudly woven in North America supporting our local communities.

Application testing of this product is recommended. Colors may vary between dye lots. This is a directional fabric.

Visit guilfordofmaine.com for samples.