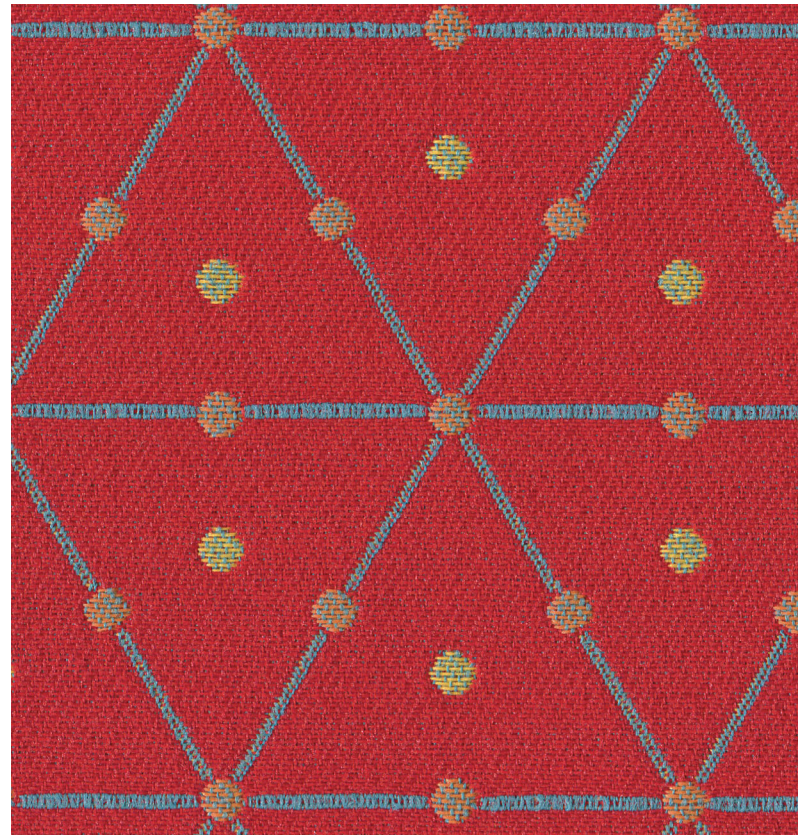
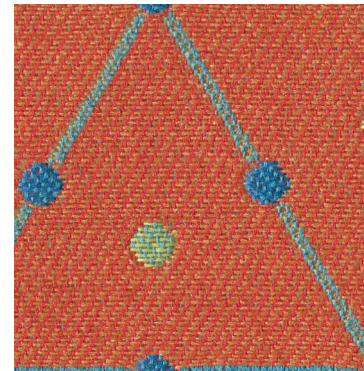


Limelight 9480/9481

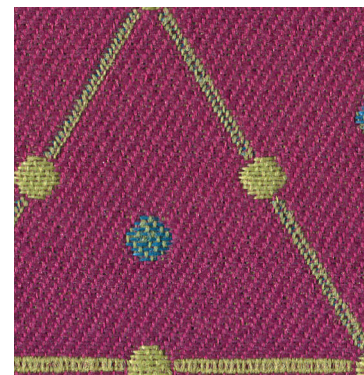
UPHOLSTERY



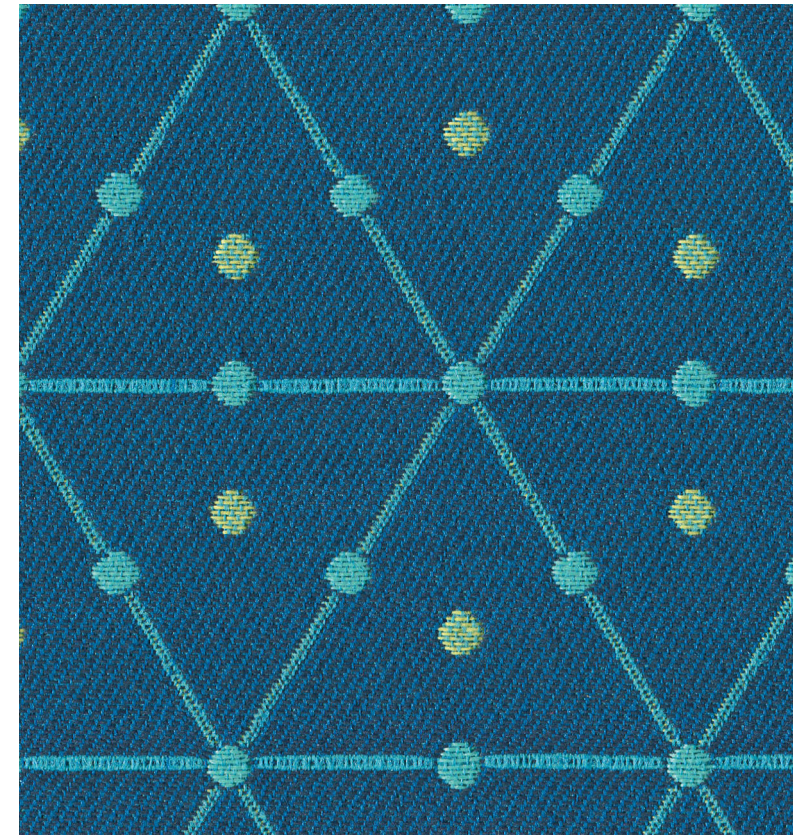
Cerise
9481-3021



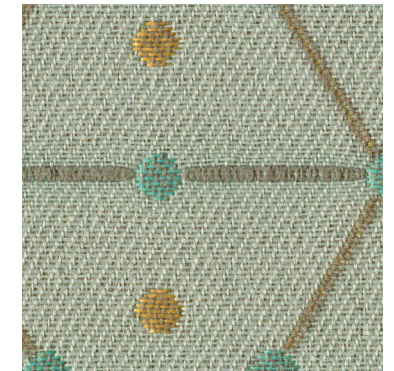
Clementine
9481-3020



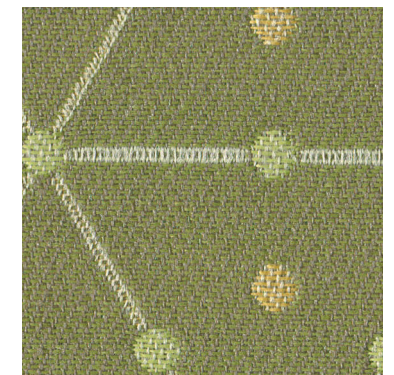
Berry
9481-3030



Pacific
9481-3040



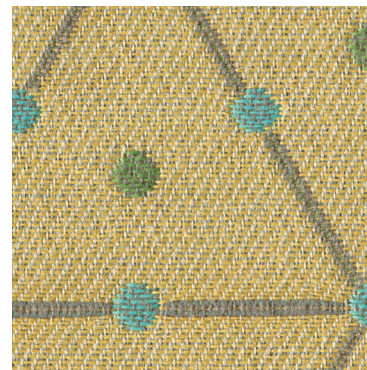
Sage
9480-3070



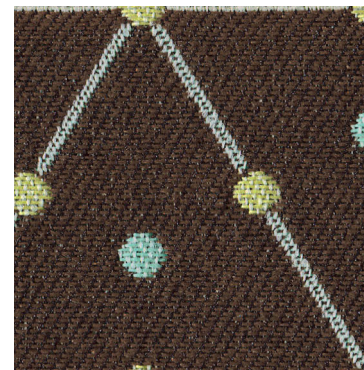
Kiwi
9481-3010



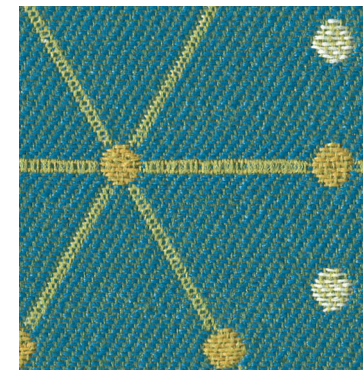
Nougat
9480-3071



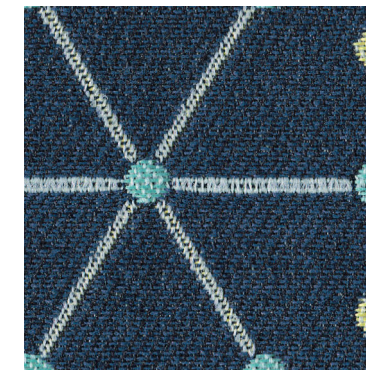
Gold
9480-3072



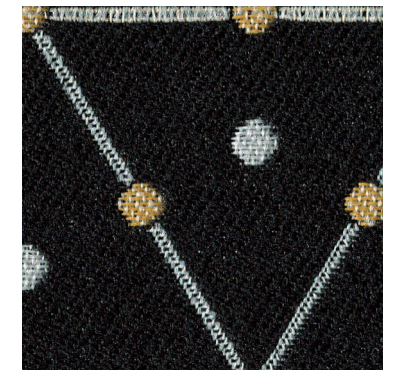
Cocoa
9481-3061



Spa
9481-3050



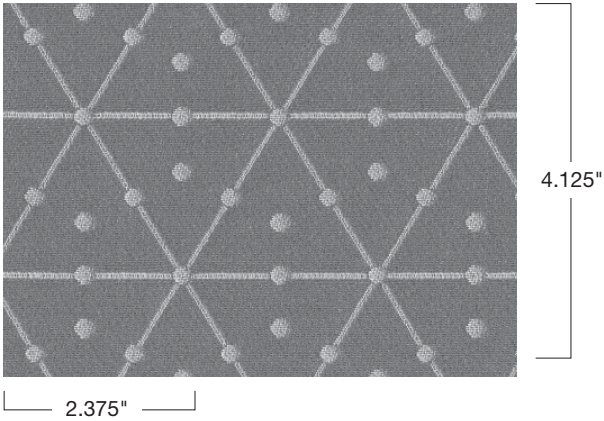
Denim
9481-3060



Ebony
9481-3062

Limelight 9480/9481

Pattern



Specifications

Content	56% pre-consumer recycled polyester 44% post-consumer recycled polyester
Weight	12.2 ± 1.0 oz./lin. yd.
Width	54" min. useable
Repeat	4.125" vertical 2.375" horizontal
Backing	polyester backcoating

Cleaning Code

Standard Care Label W-S. Clean with water based cleaning agents, foam or pure, water free solvents. Vacuuming or light brushing is recommended to prevent dust and soil buildup.

Bleach Cleanable - May be cleaned with a 10% bleach-to-water solution. Rinse well after cleaning. May also be disinfected with hydrogen peroxide, alcohol, and quaternary ammonium (quat) based cleaners.

Performance

	Colorfastness to Light (AATCC 16.3 Option 3) Grade 4 min. at 40 hours
	Colorfastness to Crocking (AATCC 8) Grade 4 min. dry & Grade 3 min. wet
	Breaking Strength (ASTM D5034) 175 lbf min. warp and 125 lbf min. fill
	Seam Slippage (ASTM D4034) 50 lbf lbf min. warp and fill
	Pilling Resistance (ASTM D3511) Class 4 min.
	Flammability CA Technical Bulletin 117-2013 Section 1
	Abrasion (ASTM D4157) 50,000 double rubs cotton duck

Sustainability

100% recycled and recyclable
Terratex is a registered trademark of Duvaltex

facts
Silver

Miscellaneous

Proudly woven in North America supporting our local communities.

Application testing of this product is recommended. Colors may vary between dye lots. This is a directional fabric.

Visit guilfordofmaine.com for samples.

*Certification Marks owned by the Association for Contract Textiles, Inc.