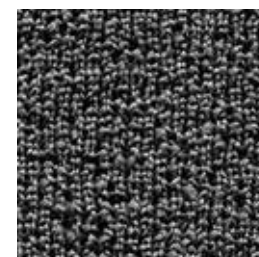


Meridian J541

Meridian J541



Dark Crimson
010



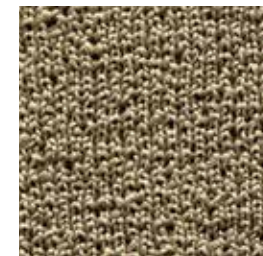
Smoke
003



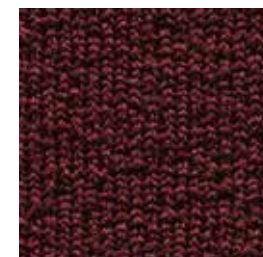
Monarch Blue
002



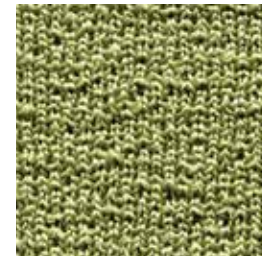
Pebble
017



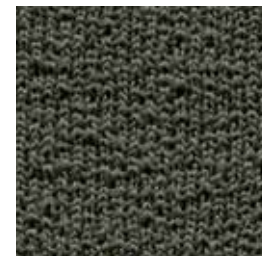
Cappuccino
007



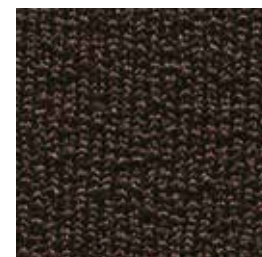
Wine
039



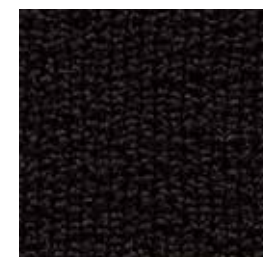
Xanadu
012



Basil
014



Chocolate
061



Black
001

Knit Upholstery

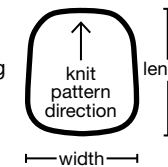
Our Knit Upholstery uses a unique process that produces dimensional form fitting fabric covers and suspension parts that improve the ergonomics, comfort and design of a chair.

Specifications

Content	100% polypropylene
Weight	15.3 ± 0.5 oz./sq. yd.
Width	sold in specific dimensions
Repeat	none

Ordering Information

Parts are available in a variety of standard sizes that can be directly upholstered, eliminating the need for cutting and sewing while reducing waste. Applied drawstrings are also available to further ease the upholstery process.



Part #	Size (W x L)	Description
5418	20" x 18"	seat or back cover
54189	20" x 18"	seat or back cover with drawstring
5419	22" x 20"	seat or back cover
54199	22" x 20"	seat or back cover with drawstring
5410	22" x 24"	seat or back cover
54109	22" x 24"	seat or back cover with drawstring
5411	24" x 24"	seat or back cover
54119	24" x 24"	seat or back cover with drawstring
5412	24" x 30"	seat or back cover
54129	24" x 30"	seat or back cover with drawstring
5413	30" x 32"	seat or back cover
54139	30" x 32"	seat or back cover with drawstring
5414	32" x 36"	seat or back cover
54149	32" x 36"	seat or back cover with drawstring
5415	28" x 41"	seat or back cover
54159	28" x 41"	seat or back cover with drawstring
5417	7" x 11"	arm cover
54179	7" x 11"	arm cover with drawstring

Custom knit size options are also available upon request, minimum order quantities may apply. Please contact your Customer Care representative for additional information.

Cleaning Code

Standard Care Label W-S. Clean with water based cleaning agents, foam or pure, water free solvents. Vacuuming or light brushing is recommended to prevent dust and soil buildup.

Bleach Cleanable - May be cleaned with a 10% bleach-to-water solution. Rinse well after cleaning. May also be disinfected with hydrogen peroxide, alcohol, and quaternary ammonium (quat) based cleaners.

Performance

- Colorfastness to Light (AATCC 16.3 Option 3)
Grade 4 min. at 40 hours
- Colorfastness to Crocking (AATCC 8)
Grade 4 min. dry & Grade 3 min. wet
- Breaking Strength (ASTM D5034)
150 lbf min. machine direction and cross direction
- Pilling Resistance (ASTM D3511)
Class 4 min.
- Flammability
CA Technical Bulletin 117-2013 Section 1
- A*** Abrasion (ASTM D4966)
250,000 double rubs min. wire screen

Miscellaneous

Proudly knit in North America supporting our local communities.

Application testing of this product is recommended. Colors may vary between dye lots. This is a directional fabric.

Visit guilfordofmaine.com for samples.

*Multiple factors affect fabric durability and appearance retention, including end-user application and proper maintenance. Wyzenbeek results above 100,000 double rubs have not been shown to be an indicator of increased lifespan.

Certification Marks owned by the Association for Contract Textiles, Inc.