

Moment 9509/9510

UPHOLSTERY

Moment 9509/9510

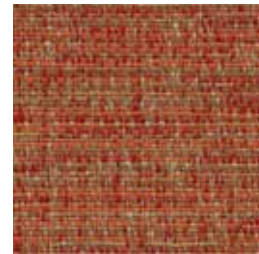
UPHOLSTERY



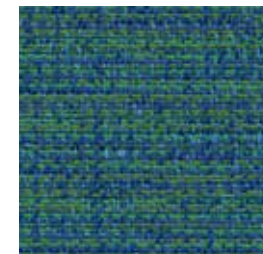
Taupe
9509-5010



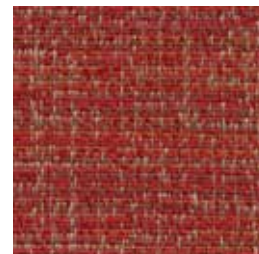
Pistachio
9509-5011



Paprika
9510-5060



Surf
9510-5070



Rouge
9509-5031



Azure
9509-5041



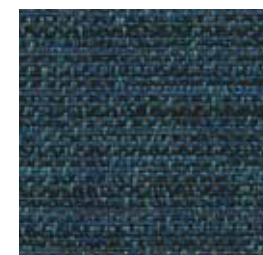
Merlot
9509-5030



Pebble
9510-5050



Carbon
9509-5020



Denim
9509-5040

Specifications

| | |
|-----------|---|
| Content | 57% post-consumer recycled polyester 19% pre-consumer recycled polyester 12% pre-consumer recycled nylon 12% nylon |
| Weight | 9.9 ± 1.0 oz./lin. yd. |
| Width | 54" min. useable |
| Repeat | 31.2" vertical 14" horizontal |
| Backing | acrylic backcoating |
| Treatment | stain repellent |

Cleaning Code

Standard Care Label W-S. Clean with water based cleaning agents, foam or pure, water free solvents. Vacuuming or light brushing is recommended to prevent dust and soil buildup.

Bleach Cleanable - May be cleaned with a 10% bleach-to-water solution. Rinse well after cleaning. May also be disinfected with hydrogen peroxide, alcohol, and quaternary ammonium (quat) based cleaners.


Miscellaneous


Proudly woven in North America supporting our local communities.


Application testing of this product is recommended. Colors may vary between dye lots. This is a directional fabric.

Visit guilfordofmaine.com for samples.

Performance

 Colorfastness to Light (AATCC 16.3 Option 3)
Grade 4 min. at 40 hours

 Colorfastness to Crocking (AATCC 8)
Grade 4 min. dry & Grade 3 min. wet

 Breaking Strength (ASTM D5034)
180 lbf warp and 120 lbf fill

Seam Slippage (ASTM D4034)
55 lbf warp and 40 lbf fill

Pilling Resistance (ASTM D3511)
Class 4 min.

 Flammability
CA Technical Bulletin 117-2013 Section 1

 **A*** Abrasion (ASTM D4157)
100,000 double rubs cotton duck

*Certification Marks owned by the Association for Contract Textiles, Inc.