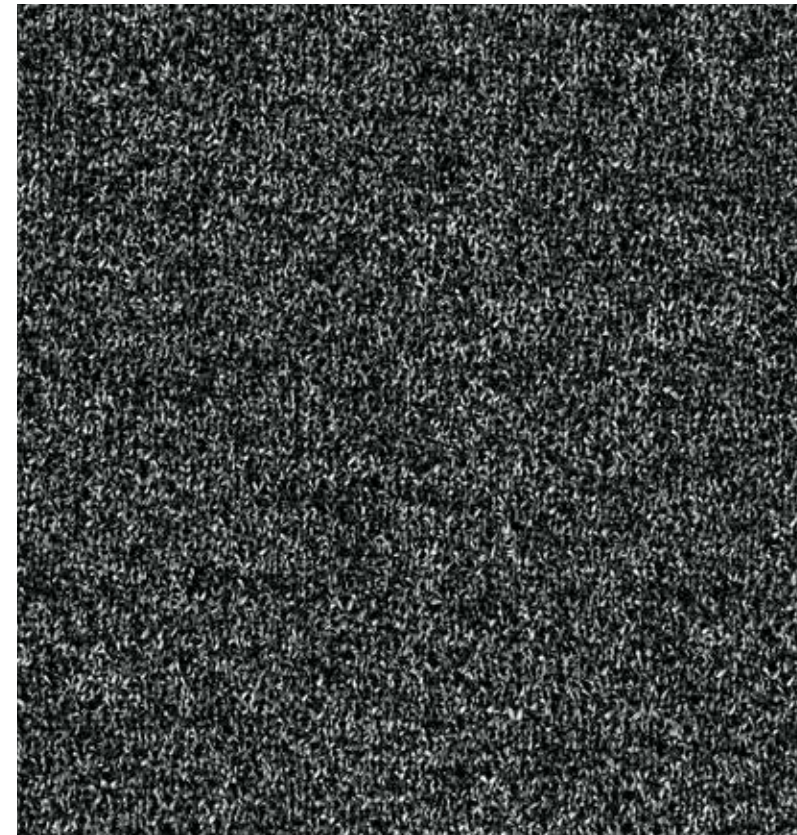


M Plus J627

M Plus J627



Granite
03



Brick
05



Indigo
02



Cork
06



Brownstone
04



Carbon
01

Knit Upholstery

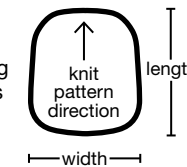
Our Knit Upholstery uses a unique process that produces dimensional form fitting fabric covers and suspension parts that improve the ergonomics, comfort and design of a chair.

Specifications

Content	100% polyester
Weight	18.7 ± 1.5 oz./sq. yd.
Width	sold in specific dimensions
Repeat	none

Ordering Information

Parts are available in a variety of standard sizes that can be directly upholstered, eliminating the need for cutting and sewing while reducing waste. Applied drawstrings are also available to further ease the upholstery process.



Part #	Size (W x L)	Description
9908	20" x 18"	seat or back cover
9909	22" x 20"	seat or back cover
9900	22" x 24"	seat or back cover
9901	24" x 24"	seat or back cover
9902	24" x 30"	seat or back cover
9903	30" x 32"	seat or back cover
9904	32" x 36"	seat or back cover
9905	28" x 41"	seat or back cover
D9908	20" x 18"	seat or back cover with drawstring
D9909	22" x 20"	seat or back cover with drawstring
D9900	22" x 24"	seat or back cover with drawstring
D9901	24" x 24"	seat or back cover with drawstring
D9902	24" x 30"	seat or back cover with drawstring
D9903	30" x 32"	seat or back cover with drawstring
D9904	32" x 36"	seat or back cover with drawstring
D9905	28" x 41"	seat or back cover with drawstring







Custom knit size options are also available upon request, minimum order quantities may apply. Please contact your Customer Care representative for additional information.

Cleaning Code

Standard Care Label W-S. Clean with water based cleaning agents, foam or pure, water free solvents. Vacuuming or light brushing is recommended to prevent dust and soil buildup.

May be cleaned with a 10% bleach-to-water solution. Rinse well after cleaning.

Performance

	Colorfastness to Light (AATCC 16.3 Option 3) Grade 4 min. at 40 hours
	Colorfastness to Crocking (AATCC 8) Grade 4 min. dry & Grade 3 min. wet
	Breaking Strength (ASTM D5034) 175 lbf min. machine direction and cross direction
	Pilling Resistance (ASTM D3511) Class 4 min.
	Flammability CA Technical Bulletin 117-2013 Section 1
	Abrasion (ASTM D4157) 200,000 double rubs min. cotton duck

Miscellaneous

Proudly knit in North America supporting our local communities.

Application testing of this product is recommended. Colors may vary between dye lots. This is a directional fabric.

Visit guilfordofmaine.com for samples.

*Multiple factors affect fabric durability and appearance retention, including end-user application and proper maintenance. Wyzenbeek results above 100,000 double rubs have not been shown to be an indicator of increased lifespan.

Certification Marks owned by the Association for Contract Textiles, Inc.