

Moguls 2386

UPHOLSTERY

UPHOLSTERY

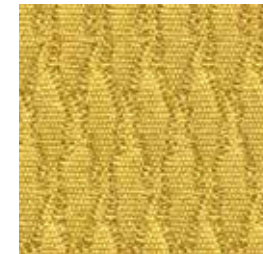
Moguls 2386



Birch
2243



Sand
2196



Honeycomb
2190



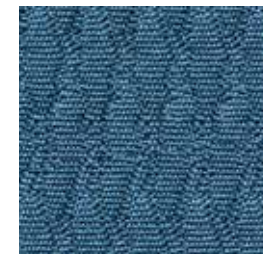
Mandarin
2245



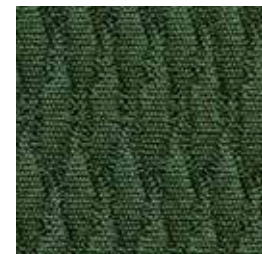
Verdant
2244



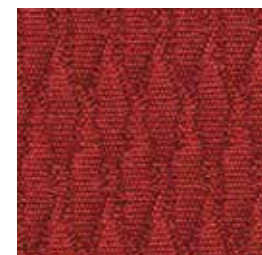
Thistle
2194



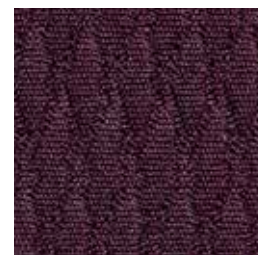
Waterfall
2691



Rhododendron
2191



Flare
2188



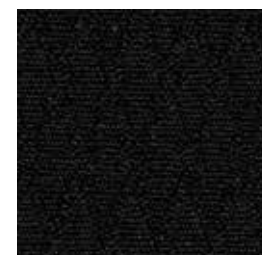
Grape Jelly
2195



Graphite
2197



Navy
2231



Onyx
2199

Specifications

Content	65% pre-consumer recycled polyester 35% post-consumer recycled polyester
Weight	13.4 ± 0.5 oz./lin. yd.
Width	54" min. useable
Repeat	.8" vertical .26" horizontal

Cleaning Code

Standard Care Label W-S. Clean with water based cleaning agents, foam or pure, water free solvents. Vacuuming or light brushing is recommended to prevent dust and soil buildup. May also be disinfected with hydrogen peroxide, alcohol, and quaternary ammonium (quat) based cleaners.


Miscellaneous


Proudly woven in North America supporting our local communities.


Application testing of this product is recommended. Colors may vary between dye lots. This is a directional fabric.

Visit guilfordofmaine.com for samples.

Performance

 Colorfastness to Light (AATCC 16.3 Option 3)
Grade 4 min. at 40 hours

 Colorfastness to Crocking (AATCC 8)
Grade 4 min. dry & Grade 3 min. wet

 Breaking Strength (ASTM D5034)
250 lbf min. warp and 180 lbf min. fill


Seam Slippage (ASTM D4034)
60 lbf min. warp and fill

Pilling Resistance (ASTM D3511)
Class 4 min.

 Flammability
CA Technical Bulletin 117-2013 Section 1

 Abrasion (ASTM D4157)
100,000 double rubs min. cotton duck

Sustainability

 **100% recycled and recyclable**
Terratec is a registered trademark of Duvaltex

*Multiple factors affect fabric durability and appearance retention, including end-user application and proper maintenance. Wyzenbeek results above 100,000 double rubs have not been shown to be an indicator of increased lifespan.

Certification Marks owned by the Association for Contract Textiles, Inc.