

BLEACH CLEANABLE

Oxford  
9914

UPHOLSTERY

UPHOLSTERY

Oxford 9914

Specifications

Content	100% polypropylene
Weight	8.8 ± 0.5 oz./lin. yd.
Width	54" min. useable
Repeat	none
Backing	SBR backcoating
Treatment	BLOCKaide® stain repellent

Cleaning Code

Standard Care Label W-S. Clean with water based cleaning agents, foam or pure, water free solvents. Vacuuming or light brushing is recommended to prevent dust and soil buildup.

**Bleach Cleanable** - May be cleaned with a 10% bleach-to-water solution. Rinse well after cleaning. May also be disinfected with hydrogen peroxide, alcohol, and quaternary ammonium (quat) based cleaners.






Miscellaneous

Proudly woven in North America supporting our local communities.

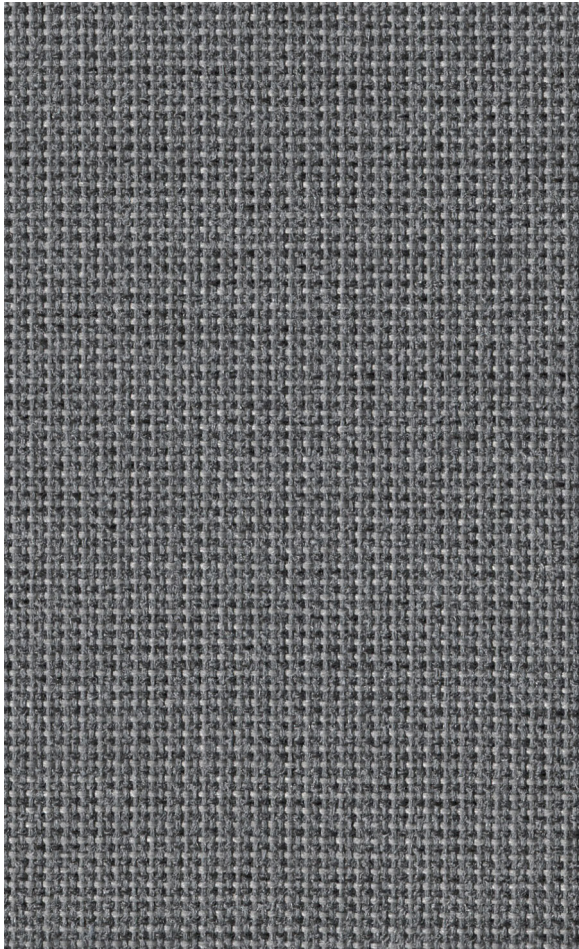
Application testing of this product is recommended. Colors may vary between dye lots. This is a directional fabric.

Visit [guilfordofmaine.com](http://guilfordofmaine.com) for samples.

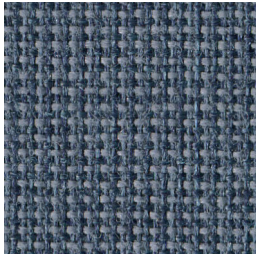
Performance

	Colorfastness to Light (AATCC 16.3 Option 3) <b>Grade 4 min. at 40 hours</b>
	Colorfastness to Crocking (AATCC 8) <b>Grade 4 min. dry &amp; Grade 3 min. wet</b>
	Breaking Strength (ASTM D5034) <b>75 lbf min. warp and 125 lbf min. fill</b>
	Seam Slippage (ASTM D4034) <b>40 lbf min. warp and fill</b>
	Pilling Resistance (ASTM D3511) <b>Class 4 min.</b>
	Flammability <b>CA Technical Bulletin 117-2013 Section 1</b>
	Abrasion (ASTM D4157) <b>30,000 double rubs min. cotton duck</b>

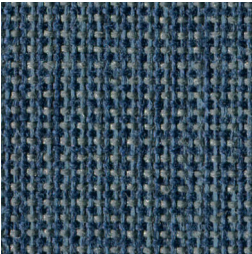
\*Certification Marks owned by the Association for Contract Textiles, Inc.



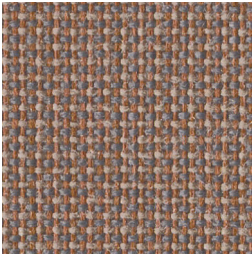
Flannel  
5040



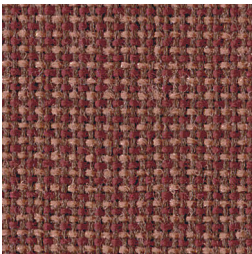
Blue  
5020



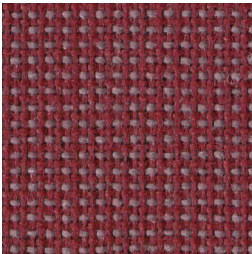
Navy  
5021



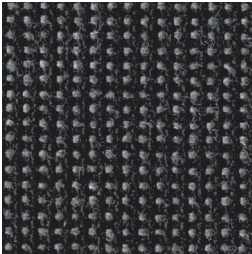
Sand  
5060



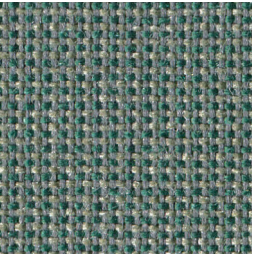
Rust  
5031



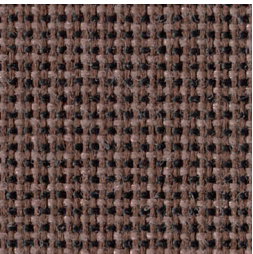
Burgundy  
5050



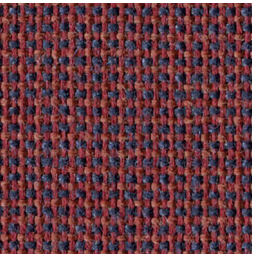
Charcoal  
5010



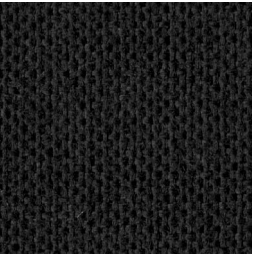
Cactus  
5041



Marl  
5030



Crangrape  
5051



Raven  
5011