

# Phrase 9508

## Phrase 9508



**Maize**  
3010



**Cayenne**  
3040



**Shiraz**  
3052



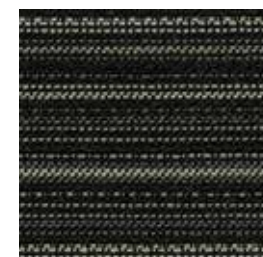
**Nutmeg**  
3051



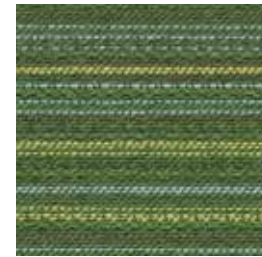
**Truffle**  
3050



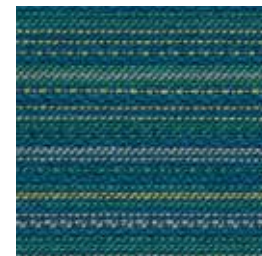
**Soapstone**  
3060



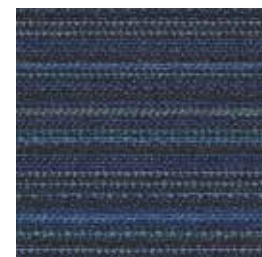
**Shale**  
3070



**Sprout**  
3020



**Poolside**  
3031



**Marine**  
3030



**Admiral**  
3071

### Specifications

Content	100% post-consumer recycled polyester
Weight	12.6 ± 1.0 oz./lin. yd.
Width	54" min. useable
Repeat	1.1875" vertical   none horizontal
Backing	acrylic backcoating

### Cleaning Code

Standard Care Label W-S. Clean with water based cleaning agents, foam or pure, water free solvents. Vacuuming or light brushing is recommended to prevent dust and soil buildup.  
**Bleach Cleanable** - May be cleaned with a 10% bleach-to-water solution. Rinse well after cleaning. May also be disinfected with hydrogen peroxide, alcohol, and quaternary ammonium (quat) based cleaners.


### Miscellaneous

Proudly woven in North America supporting our local communities.


Application testing of this product is recommended. Colors may vary between dye lots. This is a directional fabric.

Visit [guilfordofmaine.com](http://guilfordofmaine.com) for samples.


### Performance

-  Colorfastness to Light (AATCC 16.3 Option 3)  
**Grade 4 min. at 40 hours**

---

-  Colorfastness to Crocking (AATCC 8)  
**Grade 4 min. dry & Grade 3 min. wet**

---

-  Breaking Strength (ASTM D5034)  
**190 lbf warp and fill**


---

- Seam Slippage (ASTM D4034)  
**60 lbf warp and fill**


---

- Pilling Resistance (ASTM D3511)  
**Class 4 min.**

---

-  Flammability  
**CA Technical Bulletin 117-2013 Section 1**

---

-  Abrasion (ASTM D4157)  
**100,000 double rubs cotton duck**

\*Certification Marks owned by the Association for Contract Textiles, Inc.