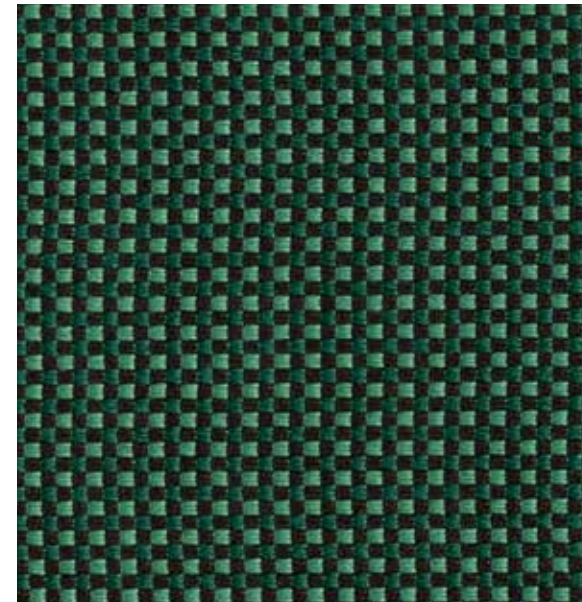
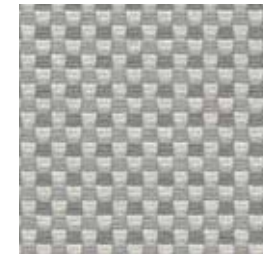


# Reason 9506

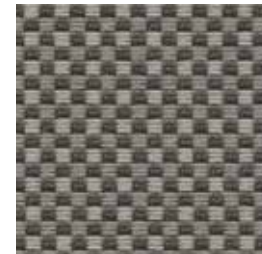
## Reason 9506



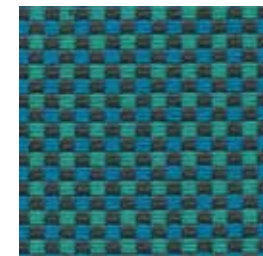
**Jade**  
3055



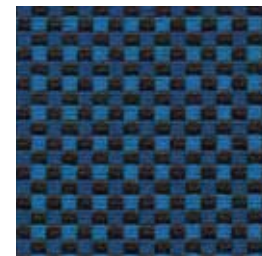
**Silver**  
3010



**Grey**  
3041



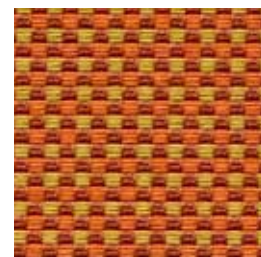
**Aqua**  
3020



**Blue**  
3051



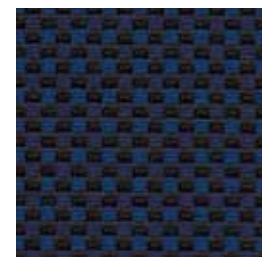
**Honey**  
3100



**Orange**  
3090



**Fire**  
3022



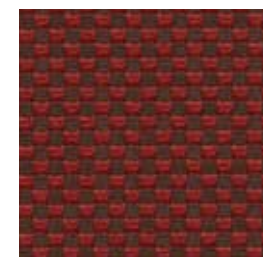
**Navy**  
3050



**Olive**  
3053



**Amber**  
3030



**Wine**  
3020



**Black**  
3040

### Specifications

Content	<b>53% pre-consumer recycled polyester 47% post-consumer recycled polyester</b>
Weight	<b>13.0 ± 1.0 oz./lin. yd.</b>
Width	<b>54" min. useable</b>
Repeat	<b>.1875" vertical and horizontal</b>
Backing	<b>acrylic backcoating</b>

### Cleaning Code


Standard Care Label W-S. Clean with water based cleaning agents, foam or pure, water free solvents. Vacuuming or light brushing is recommended to prevent dust and soil buildup.  
**Bleach Cleanable** - May be cleaned with a 10% bleach-to-water solution. Rinse well after cleaning. May also be disinfected with hydrogen peroxide, alcohol, and quaternary ammonium (quat) based cleaners.

### Miscellaneous


Proudly woven in North America supporting our local communities.  
 Application testing of this product is recommended. Colors may vary between dye lots. This is a directional fabric.

Visit [guilfordofmaine.com](http://guilfordofmaine.com) for samples.


### Performance

-  Colorfastness to Light (AATCC 16.3 Option 3)  
**Grade 4 min. at 40 hours**

---

-  Colorfastness to Crocking (AATCC 8)  
**Grade 4 min. dry & Grade 3 min. wet**

---

-  Breaking Strength (ASTM D5034)  
**200 lbf warp and 250 lbf fill**

---

- Seam Slippage (ASTM D4034)  
**70 lbf warp and 50 lbf fill**

---

- Pilling Resistance (ASTM D3511)  
**Class 4 min.**

---

-  Flammability  
**CA Technical Bulletin 117-2013 Section 1**

---

-  Abrasion (ASTM D4157)  
**100,000 double rubs cotton duck**

### Sustainability



\*Certification Marks owned by the Association for Contract Textiles, Inc.