

Snakeskin 9000

UPHOLSTERY

UPHOLSTERY

Snakeskin 9000

Specifications

Content	53% pre-consumer recycled polyester 47% post-consumer recycled polyester
Weight	10.0 ± 0.5 oz./lin. yd.
Width	54" min. useable
Repeat	13.125" vertical 14.5" horizontal
Treatment	BLOCKaide® stain repellent

Cleaning Code

Standard Care Label W-S. Clean with water based cleaning agents, foam or pure, water free solvents. Vacuuming or light brushing is recommended to prevent dust and soil buildup.

Bleach Cleanable - May be cleaned with a 10% bleach-to-water solution. Rinse well after cleaning. May also be disinfected with hydrogen peroxide, alcohol, and quaternary ammonium (quat) based cleaners.

Miscellaneous

Proudly woven in North America supporting our local communities.


Application testing of this product is recommended. Colors may vary between dye lots. This is a directional fabric.

Visit guilfordofmaine.com for samples.

Performance

 Colorfastness to Light (AATCC 16.3 Option 3)
Grade 4 min. at 40 hours

 Colorfastness to Crocking (AATCC 8)
Grade 4 min. dry & Grade 3 min. wet

 Breaking Strength (ASTM D5034)
175 lbf min. warp and fill


Seam Slippage (ASTM D4034)
60 lbf min. warp and fill

Pilling Resistance (ASTM D3511)
Class 4 min.

 Flammability
CA Technical Bulletin 117-2013 Section 1

 ^{*} Abrasion (ASTM D4157)
60,000 double rubs min. cotton duck

Sustainability

 **100% recycled and recyclable**
Terratec is a registered trademark of Duvaltex

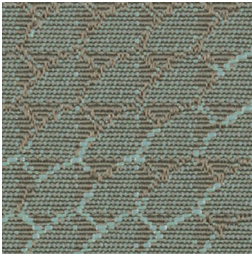
*Certification Marks owned by the Association for Contract Textiles, Inc.



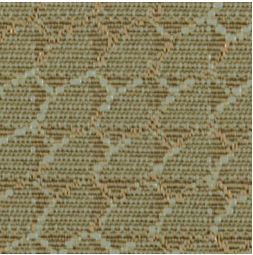
Bisque
6091



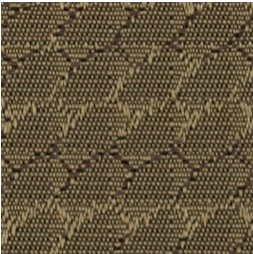
Butterscotch
6020



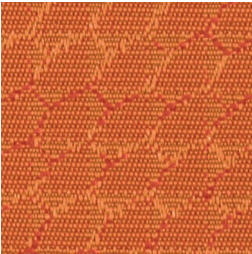
Eucalyptus
6090



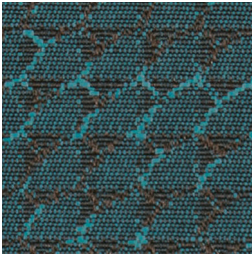
Sage
6011



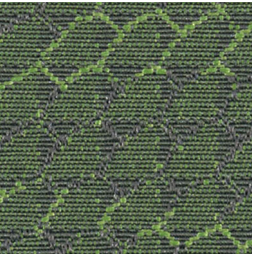
Khaki
6010



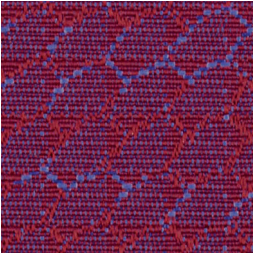
Pumpkin
6030



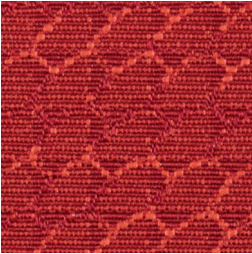
Aegean
6100



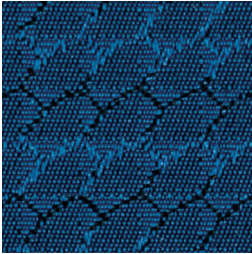
Savanna
6110



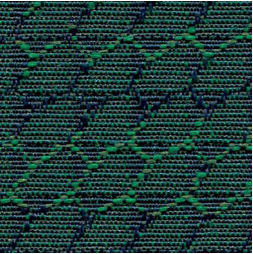
Crimson
6041



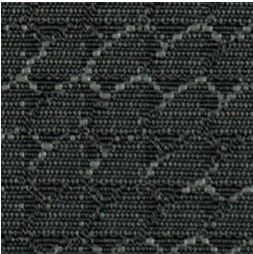
Candy
6040



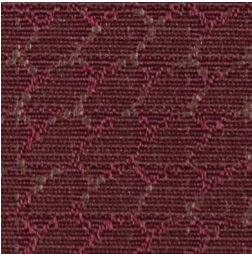
Cobalt
6080



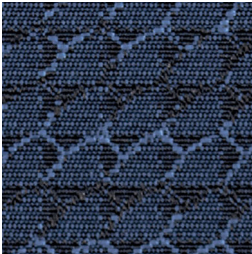
Garden
6050



Charcoal
6070



Cranberry
6060



Midnight
6072