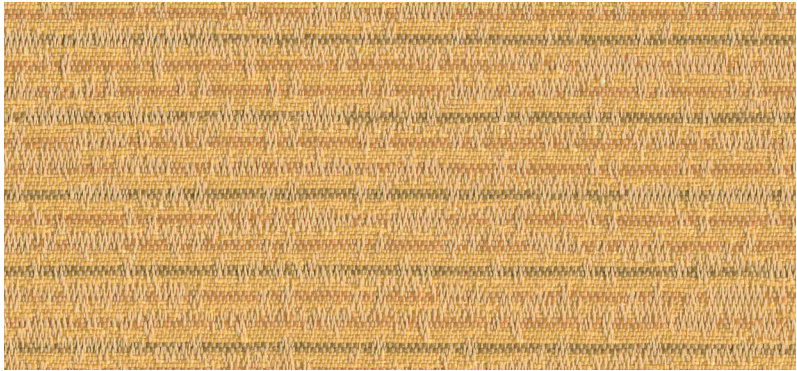
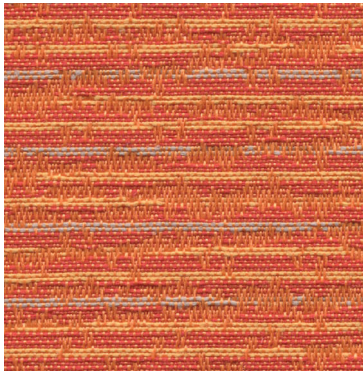


# Soundbyte 2879

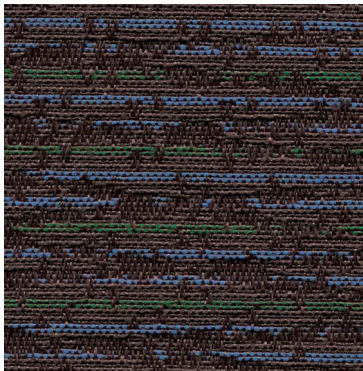
UPHOLSTERY



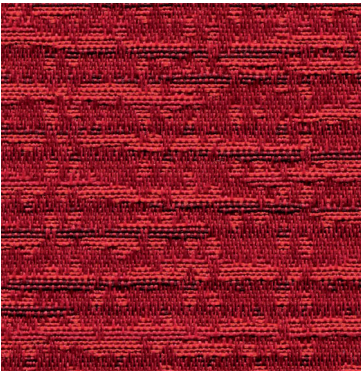
**Haze**  
6030



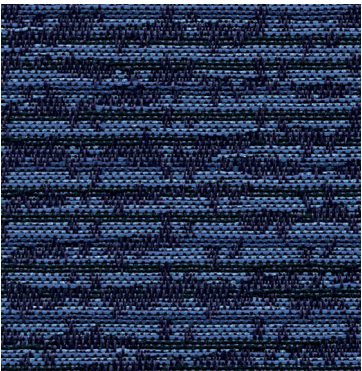
**Pumpkin**  
6040



**Umber**  
6090



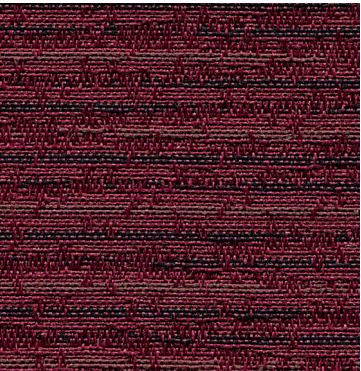
**Candy**  
6050



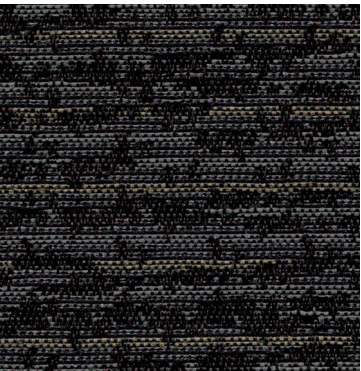
**Midnight**  
6070



**Sage**  
6010



**Cranberry**  
6080



**Marble**  
6100

## Soundbyte 2879

UPHOLSTERY

### Specifications

Content	57% pre-consumer recycled polyester 43% post-consumer recycled polyester
Weight	10.3 ± 0.5 oz./lin. yd.
Width	54" min. useable
Repeat	35" vertical   7" horizontal
Treatment	BLOCKaide® stain repellent

### Cleaning Code

Standard Care Label W-S. Clean with water based cleaning agents, foam or pure, water free solvents. Vacuuming or light brushing is recommended to prevent dust and soil buildup.

**Bleach Cleanable** - May be cleaned with a 10% bleach-to-water solution. Rinse well after cleaning. May also be disinfected with hydrogen peroxide, alcohol, and quaternary ammonium (quat) based cleaners.






### Miscellaneous

Proudly woven in North America supporting our local communities.


Application testing of this product is recommended. Colors may vary between dye lots. This is a directional fabric.

Visit [guilfordofmaine.com](https://www.guilfordofmaine.com) for samples.

### Performance

	Colorfastness to Light (AATCC 16.3 Option 3) <b>Grade 4 min. at 40 hours</b>
	Colorfastness to Crocking (AATCC 8) <b>Grade 4 min. dry &amp; Grade 3 min. wet</b>
	Breaking Strength (ASTM D5034) <b>225 lbf min. warp and fill</b>
	Seam Slippage (ASTM D4034) <b>75 lbf min. warp and fill</b>
	Pilling Resistance (ASTM D3511) <b>Class 4 min.</b>
	Flammability <b>CA Technical Bulletin 117-2013 Section 1</b>
	Abrasion (ASTM D4157) <b>30,000 double rubs min. cotton duck</b>

### Sustainability

 **100% recycled and recyclable**  
Terratec is a registered trademark of Duvaltex

\*Certification Marks owned by the Association for Contract Textiles, Inc.