

# Twilight 9935

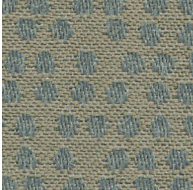
UPHOLSTERY

# Twilight 9935

UPHOLSTERY



**Cotton**  
5090



**Sky**  
5040



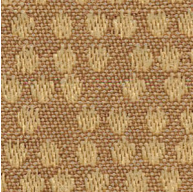
**Aquamarine**  
5130



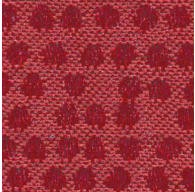
**Lapis**  
5060



**Canary**  
5120



**Brass**  
5031



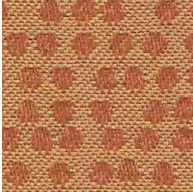
**Cherry**  
5110



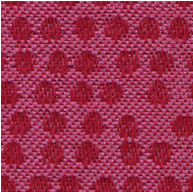
**Angora**  
5080



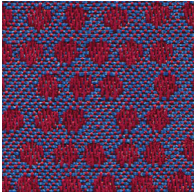
**Hemp**  
5100



**Saffron**  
5140



**Begonia**  
5151



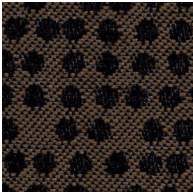
**Berry**  
5150



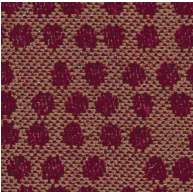
**Chartreuse**  
5160



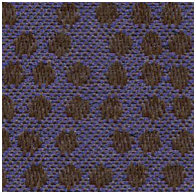
**Jungle**  
5050



**Cocoa**  
5010



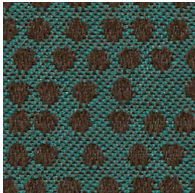
**Merlot**  
5020



**Iris**  
5170



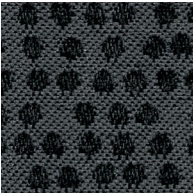
**Lily Pad**  
5101



**Turquoise**  
5171



**Loden**  
5172



**Charcoal**  
5011

## Specifications

Content	65% post-consumer recycled polyester 18% pre-consumer recycled polyester 17% nylon
Weight	8.8 ± 1.0 oz./lin. yd.
Width	54" min. useable
Repeat	4.5" vertical and horizontal
Backing	SBR backcoating
Treatment	BLOCKaide® stain repellent

## Cleaning Code

Standard Care Label W-S. Clean with water based cleaning agents, foam or pure, water free solvents. Vacuuming or light brushing is recommended to prevent dust and soil buildup.

**Bleach Cleanable** - May be cleaned with a 10% bleach-to-water solution. Rinse well after cleaning. May also be disinfected with hydrogen peroxide, alcohol, and quaternary ammonium (quat) based cleaners.

## Miscellaneous


Proudly woven in North America supporting our local communities.


Application testing of this product is recommended. Colors may vary between dye lots. This is a directional fabric.

Visit [guilfordofmaine.com](https://www.guilfordofmaine.com) for samples.

## Performance

 Colorfastness to Light (AATCC 16.3 Option 3)  
**Grade 4 min. at 40 hours**

 Colorfastness to Crocking (AATCC 8)  
**Grade 4 min. dry & Grade 3 min. wet**

 Breaking Strength (ASTM D5034)  
**175 lbf min. warp and 130 lbf min. fill**

Seam Slippage (ASTM D4034)  
**55 lbf min. warp and 40 lbf min. fill**

Pilling Resistance (ASTM D3511)  
**Class 4 min.**

 Flammability  
**CA Technical Bulletin 117-2013 Section 1**

 <sup>\*</sup> Abrasion (ASTM D4157)  
**50,000 double rubs min. cotton duck**

\*Certification Marks owned by the Association for Contract Textiles, Inc.