

BLEACH CLEANABLE

Xceed 5901

UPHOLSTERY

UPHOLSTERY

Xceed 5901

Specifications

Content	100% polypropylene
Weight	17.5 ± 1.0 oz./lin. yd.
Width	54" min. useable
Repeat	none
Backing	SBR backcoating
Treatment	BLOCKaide® stain repellent

Cleaning Code

Standard Care Label W-S. Clean with water based cleaning agents, foam or pure, water free solvents. Vacuuming or light brushing is recommended to prevent dust and soil buildup.

Bleach Cleanable - May be cleaned with a 10% bleach-to-water solution. Rinse well after cleaning. May also be disinfected with hydrogen peroxide, alcohol, and quaternary ammonium (quat) based cleaners.






Miscellaneous

Proudly woven in North America supporting our local communities.

Application testing of this product is recommended. Colors may vary between dye lots. This is a directional fabric.

Visit guilfordofmaine.com for samples.

Performance

	Colorfastness to Light (AATCC 16.3 Option 3) Grade 4 min. at 40 hours
	Colorfastness to Crocking (AATCC 8) Grade 4 min. dry & Grade 3 min. wet
	Breaking Strength (ASTM D5034) 250 lbf min. warp and 300 lbf min. fill
	Seam Slippage (ASTM D4034) 50 lbf min. warp and fill
	Pilling Resistance (ASTM D3511) Class 4 min.
	Flammability CA Technical Bulletin 117-2013 Section 1I
	Abrasion (ASTM D4157) 50,000 double rubs min. wire screen

*Certification Marks owned by the Association for Contract Textiles, Inc.



Wedgewood
5011



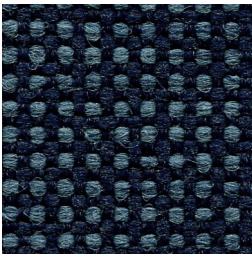
Forest
5027



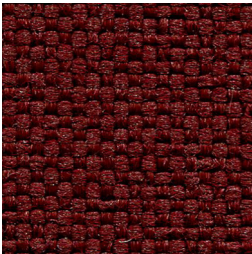
Chocolate
5049



Ash
5004



Harbor
5031



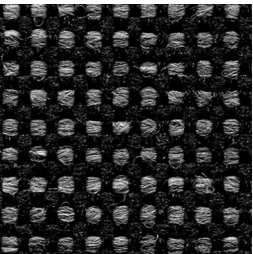
Maroon
5020



Plum
5035



Lapis
5012



Onyx
5023



Ebony
5024