

Punch Card 1242

UPHOLSTERY

UPHOLSTERY

Punch Card 1242



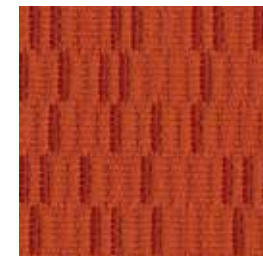
Crimson
1307



Alabaster
1301



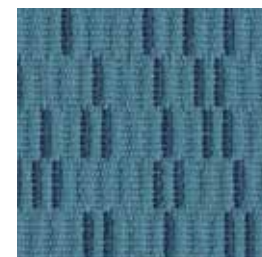
Putty
1303



Orange
1308



Crisp
1305



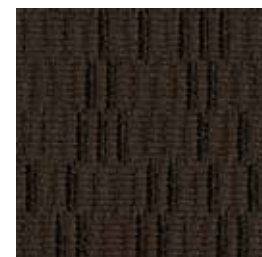
Sky
1306



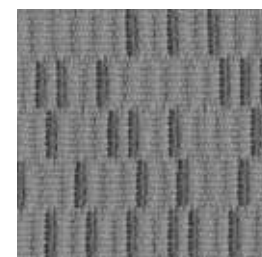
Navy
1309



Burgundy
1311



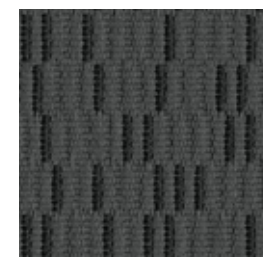
Peat
1312



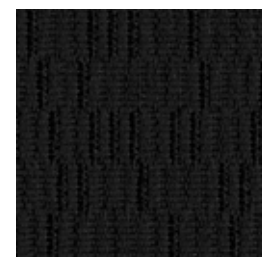
Silver Lining
1304



Cadet
1310



Carbon
1302



Abyss
1313

Specifications

Content	78% polyester 22% post-consumer recycled polyester
Weight	11.1 ± 1.0 oz./lin. yd.
Width	54" min. useable
Repeat	25" vertical 12.5" horizontal
Backing	acrylic backcoating
Treatment	stain repellent

Cleaning Code

Standard Care Label W-S. Clean with water based cleaning agents, foam or pure, water free solvents. Vacuuming or light brushing is recommended to prevent dust and soil buildup. May also be disinfected with hydrogen peroxide, alcohol, and quaternary ammonium (quat) based cleaners.


Miscellaneous


Proudly woven in North America supporting our local communities.


Application testing of this product is recommended. Colors may vary between dye lots. This is a directional fabric.

Visit guilfordofmaine.com for samples.

Performance

 Colorfastness to Light (AATCC 16.3 Option 3)
Grade 4 min. at 40 hours

 Colorfastness to Crocking (AATCC 8)
Grade 4 min. dry & Grade 3 min. wet

 Breaking Strength (ASTM D5034)
280 lbf warp and 230 lbf fill

Seam Slippage (ASTM D4034)
105 lbf warp and 60 lbf fill

Pilling Resistance (ASTM D3511)
Class 4

 Flammability
CA Technical Bulletin 117-2013 Section 1

 Abrasion (ASTM D4157)
100,000 double rubs cotton duck

Sustainability



*Certification Marks owned by the Association for Contract Textiles, Inc.

† Not available in USA