

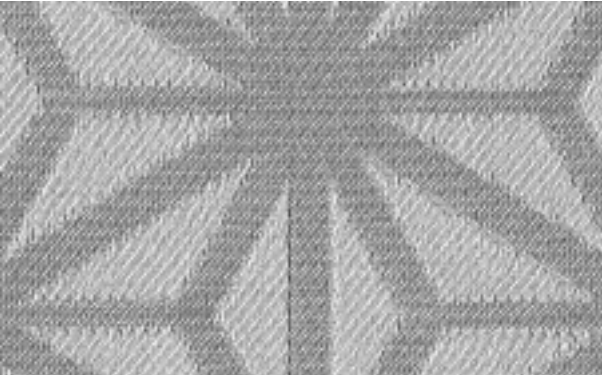
Chalet
2930

CUBICLE

CUBICLE

Chalet 2930

Actual Size







Specifications

Content	100% FR polyester
Weight	13.5 ± 1.0 oz./lin. yd.
Width	72" min. useable
Repeat	20.8" vertical 18.9" horizontal
Treatment	FR antimicrobial

Cleaning Code

Standard Care Label W-S. Commercial wash at 160°F maximum wash temperature using detergents recommended for the type of washing machines being used, no chlorine bleach. Rinse warm. Do not overload the washer as this may result in inadequate cleansing of the fabric and excessive wrinkling. Dry on synthetic (cool) setting until slightly damp or just dry. Do not overload the dryer. Over-drying or drying at hot temperatures may cause unacceptable shrinkage to occur. If necessary, press with a cool iron ("polyester" or "synthetics" setting, max temp 275° F).

Performance

	Colorfastness to Light (AATCC 16 Option 3) Grade 4 min. at 60 hours
	Colorfastness to Crocking (AATCC 8) Grade 4 min. dry & Grade 3 min. wet
	Breaking Strength (ASTM D5034) 200 lbf min. warp and 100 lbf min. fill
	Seam Slippage (ASTM D4034) 60 lbf min. warp and fill
	Flammability NFPA 701 TM#1 - Pass

*ACT® registered certification marks.

Miscellaneous

Every effort has been made to ensure color accuracy of the digital images, however, please order a sample before specification. Application testing of this product is recommended. Colors may vary between dye lots. This is a directional fabric.

Proudly woven in the USA supporting our local communities.

Visit [guilfordofmaine.com](https://www.guilfordofmaine.com) for samples.



Driftwood
9010



Azure
9011



Sunset
9020



Dusk
9030

Please order a memo sample to view full scale pattern.