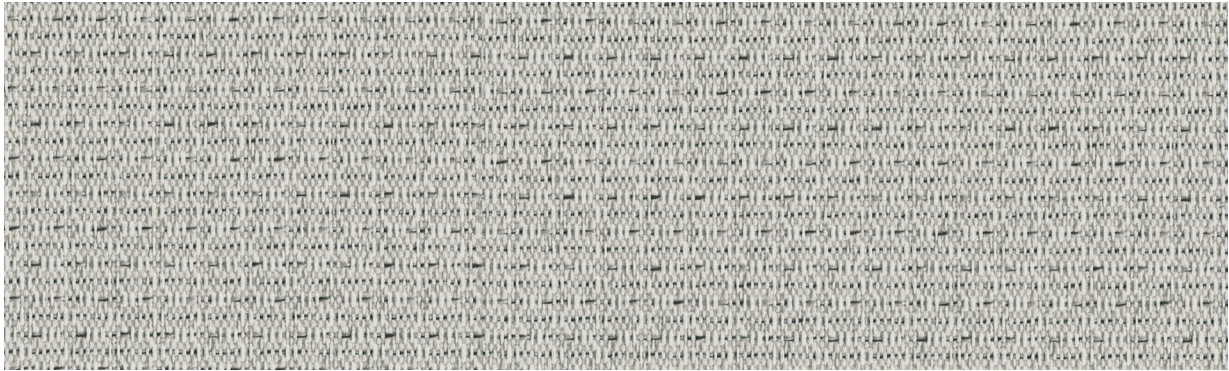


Parameter
3945



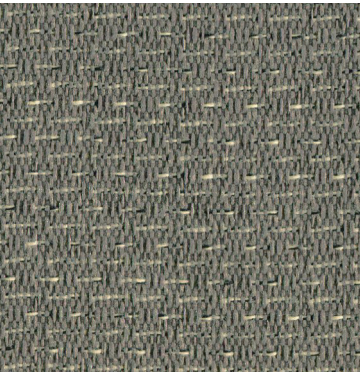
Winter
010



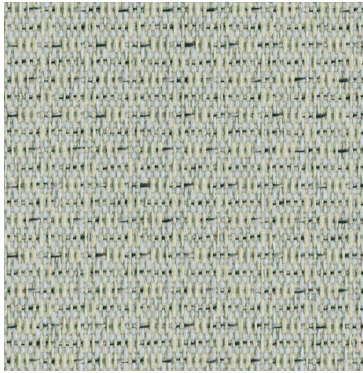
Alabaster
011



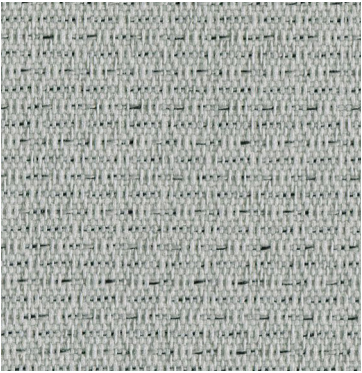
Sand Dune
020



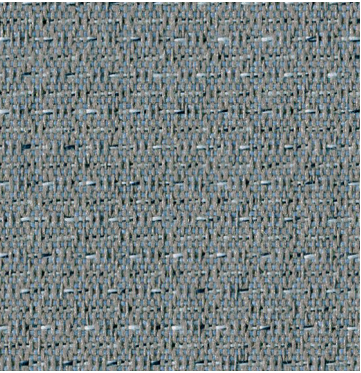
Shale
050



Eucalyptus
030



Shadow
040



Stormy
051

Parameter 3945

Specifications

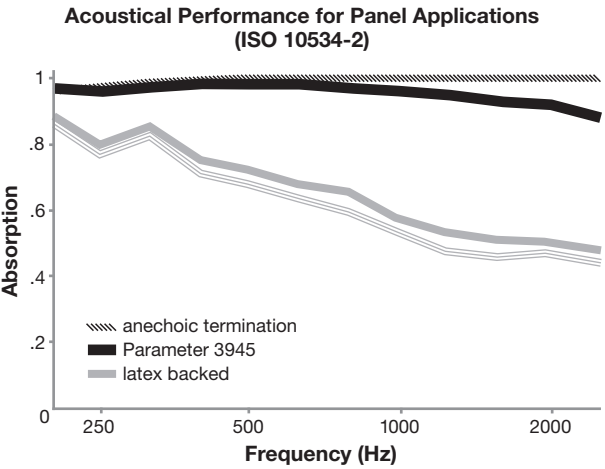
Content	82% pre-consumer recycled polyester 18% post-consumer recycled polyester
Weight	10.0 ± 1.0 oz./lin. yd.
Width	66" min. useable
Repeat	.35" vertical .2" horizontal

Cleaning Code

Standard Care Label W-S. Clean with water based cleaning agents, foam or pure, water free solvents. Vacuuming or light brushing is recommended to prevent dust and soil buildup. May also be disinfected with hydrogen peroxide, alcohol, and quaternary ammonium (quat) based cleaners.





Acoustical Performance

The plot below summarizes impedance tube measurements of absorption of an anechoic termination and various fabrics in front of the anechoic termination.





NRC of anechoic termination	1.00
NRC of fabric in front of anechoic termination	.95

Performance

	Colorfastness to Light (AATCC 16.3 Option 3) Grade 4 min. at 40 hours
	Colorfastness to Crocking (AATCC 8) Grade 4 min. dry & Grade 3 min. wet
	Breaking Strength (ASTM D5034) 175 lbf min. warp and fill
	Flammability (ASTM E84) Class I or A

Sustainability

 **100% recycled and recyclable**
Terratec is a registered trademark of Duvaltex

 **facts™**
Silver

Miscellaneous

Proudly woven in North America supporting our local communities.

Application testing of this product is recommended.
Colors may vary between dye lots. This is a directional fabric.

Visit [guilfordofmaine.com](https://www.guilfordofmaine.com) for samples.

 This pattern is included in the underwriters laboratory panel fabric recognition program. Additional testing of this U.L. recognized component fabric is not required on approved panels from participating manufacturers.

*Certification Marks owned by the Association for Contract Textiles, Inc.