

Aquatint 9474

UPHOLSTERY



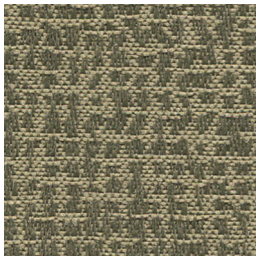
Buttercup
5080



Khaki
5111



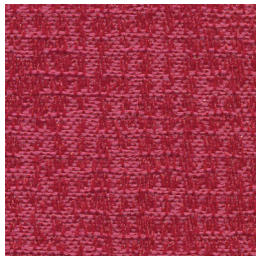
Sage
5110



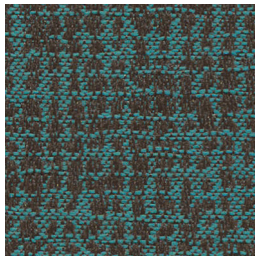
Guacamole
5030



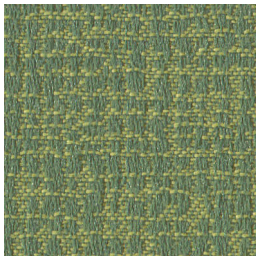
Dijon
5020



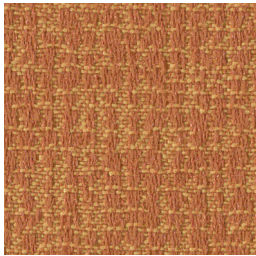
Flamingo
5060



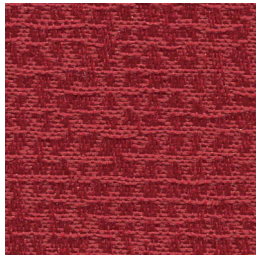
Teal
5090



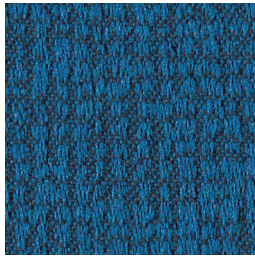
Grass
5070



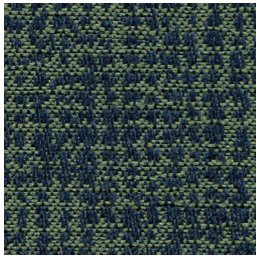
Carrot
5120



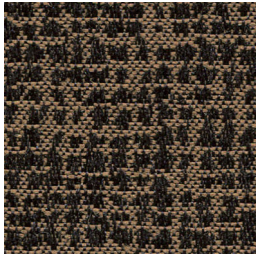
Dragon
5050



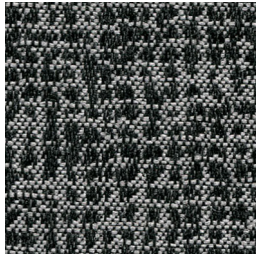
Sapphire
5100



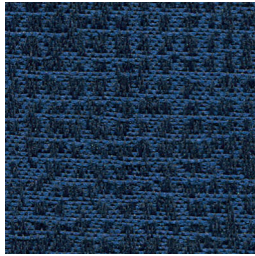
Laguna
5042



Cobble
5012



Strobe
5010



Lapis
5043

Aquatint 9474

UPHOLSTERY

Specifications

Content	53% post-consumer recycled polyester 47% pre-consumer recycled polyester
Weight	9.9 ± 1.0 oz./lin. yd.
Width	54" min. useable
Repeat	3.187" vertical 3.375" horizontal
Backing	SBR backcoating
Treatment	BLOCKaide® stain repellent

Cleaning Code

Standard Care Label W-S. Clean with water based cleaning agents, foam or pure, water free solvents. Vacuuming or light brushing is recommended to prevent dust and soil buildup.

May be cleaned with a 10% bleach-to-water solution. Rinse well after cleaning. May also be disinfected with hydrogen peroxide, alcohol, and quaternary ammonium (quat) based cleaners.

Miscellaneous

Proudly woven in North America supporting our local communities.

Application testing of this product is recommended. Colors may vary between dye lots. This is a directional fabric.

Visit guilfordofmaine.com for samples.

Performance

 Colorfastness to Light (AATCC 16.3 Option 3)
Grade 4 min. at 40 hours

 Colorfastness to Crocking (AATCC 8)
Grade 4 min. dry & Grade 3 min. wet

 Breaking Strength (ASTM D5034)
150 lbf min. warp and 100 lbf min. fill

Seam Slippage (ASTM D4034)
70 lbf min. warp and fill

Pilling Resistance (ASTM D3511)
Class 4 min.

 Flammability
CA Technical Bulletin 117-2013 Section 1

* Abrasion (ASTM D4157)
45,000 double rubs min. cotton duck

Sustainability



*Certification Marks owned by the Association for Contract Textiles, Inc.