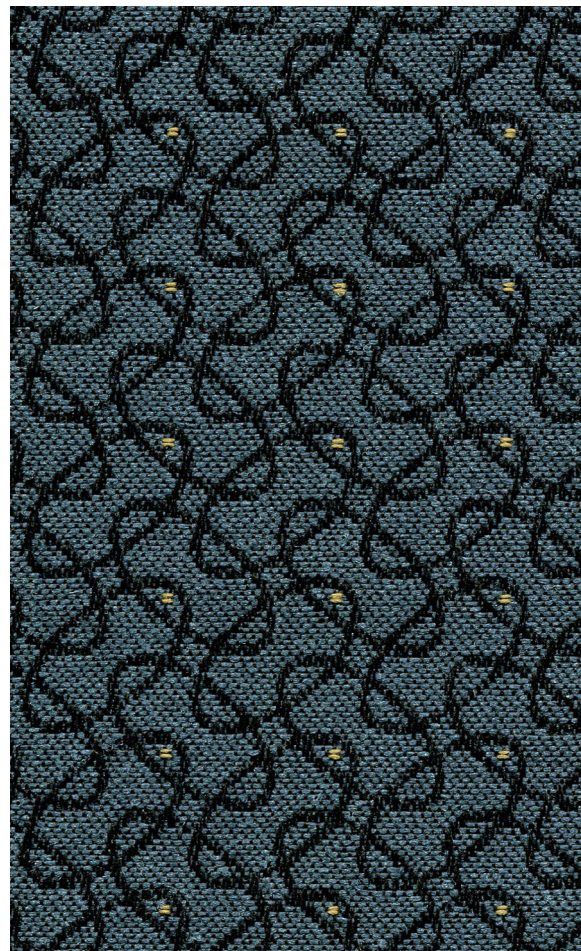


# Transport 9845

UPHOLSTERY

## Transport 9845

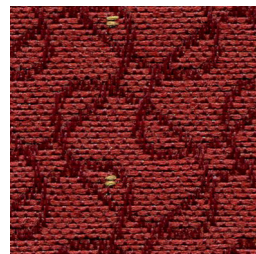
UPHOLSTERY



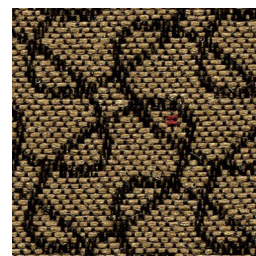
**Cornflower**  
5014



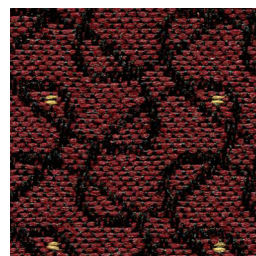
**Brass**  
5030



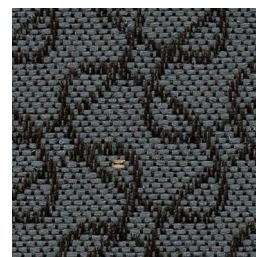
**Rouge**  
5020



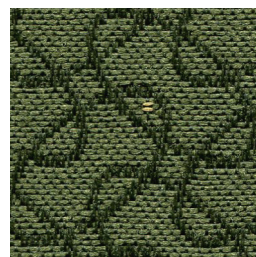
**Cow Hide**  
5010



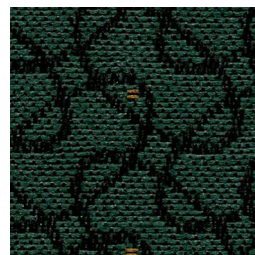
**Garnet**  
5013



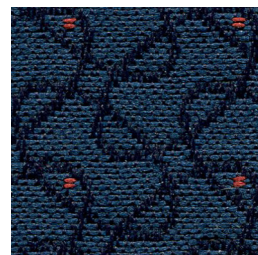
**Pewter**  
5012



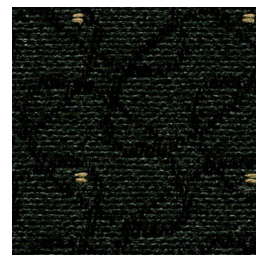
**Patina**  
5050



**Hunter**  
5016



**Midnight**  
5040



**Blackout**  
5011

### Specifications

Content	58% polypropylene 42% pre-consumer recycled polyester
Weight	9.2 ± 0.5 oz./lin. yd.
Width	54" min. useable
Repeat	.8125" vertical and horizontal
Backing	SBR backcoating
Treatment	BLOCKaide® stain repellent

### Cleaning Code

Standard Care Label W-S. Clean with water based cleaning agents, foam or pure, water free solvents. Vacuuming or light brushing is recommended to prevent dust and soil buildup.

May be cleaned with a 10% bleach-to-water solution. Rinse well after cleaning. May also be disinfected with hydrogen peroxide, alcohol, and quaternary ammonium (quat) based cleaners.

### Miscellaneous


Proudly woven in North America supporting our local communities.


Application testing of this product is recommended. Colors may vary between dye lots. This is a directional fabric.

Visit [guilfordofmaine.com](http://guilfordofmaine.com) for samples.

### Performance

 Colorfastness to Light (AATCC 16.3 Option 3)  
**Grade 4 min. at 40 hours**

 Colorfastness to Crocking (AATCC 8)  
**Grade 4 min. dry & Grade 3 min. wet**

 Breaking Strength (ASTM D5034)  
**125 lbf min. warp and 150 lbf min. fill**

Seam Slippage (ASTM D4034)  
**60 lbf min. warp and fill**

Pilling Resistance (ASTM D3511)  
**Class 4 min.**

 Flammability  
**CA Technical Bulletin 117-2013 Section 1**

 <sup>\*</sup> Abrasion (ASTM D4157)  
**30,000 double rubs min. cotton duck**

\*Certification Marks owned by the Association for Contract Textiles, Inc.