

Whirl 9936

UPHOLSTERY

Whirl 9936

UPHOLSTERY



Linen
5080



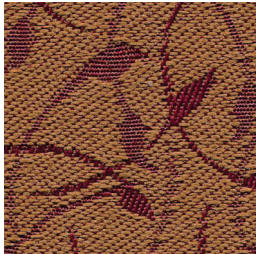
Gold
5030



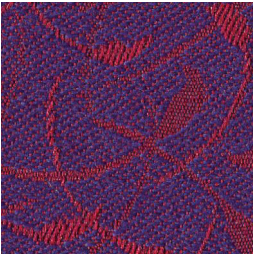
Caramel
5040



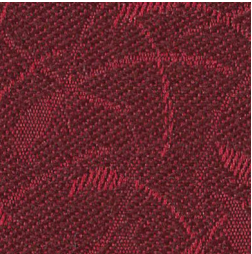
Chestnut
5011



Rust
5021



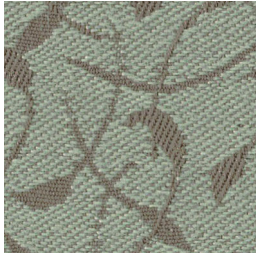
Boysenberry
5131



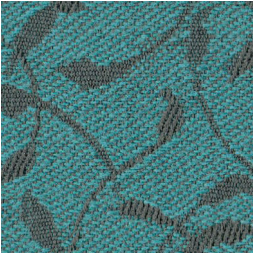
Sangria
5130



Shadow
5140



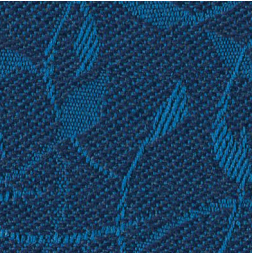
Mint
5141



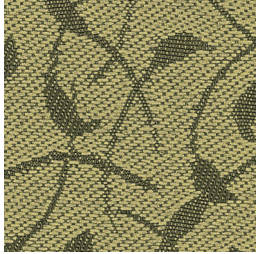
Bahama
5150



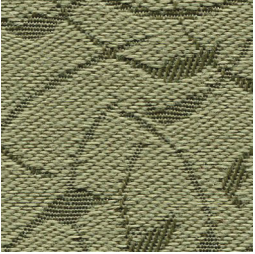
Cadet
5070



Azure
5120



Pesto
5061



Celadon
5060



Spinach
5091



Forest
5110

Specifications

Content	52% pre-consumer recycled polyester 48% post-consumer recycled polyester
Weight	10.9 ± 1.0 oz./lin. yd.
Width	54" min. useable
Repeat	2.25" vertical 3.6" horizontal
Backing	SBR backcoating
Treatment	BLOCKaide® stain repellent

Cleaning Code

Standard Care Label W-S. Clean with water based cleaning agents, foam or pure, water free solvents. Vacuuming or light brushing is recommended to prevent dust and soil buildup.

May be cleaned with a 10% bleach-to-water solution. Rinse well after cleaning. May also be disinfected with hydrogen peroxide, alcohol, and quaternary ammonium (quat) based cleaners.

Miscellaneous

Proudly woven in North America supporting our local communities.

Application testing of this product is recommended. Colors may vary between dye lots. This is a directional fabric.

Visit guilfordofmaine.com for samples.

Performance

	Colorfastness to Light (AATCC 16.3 Option 3) Grade 4 min. at 40 hours
	Colorfastness to Crocking (AATCC 8) Grade 4 min. dry & Grade 3 min. wet
	Breaking Strength (ASTM D5034) 150 lbf min. warp and 120 lbf min. fill
	Seam Slippage (ASTM D4034) 75 lbf min. warp and 65 lbf min. fill
	Pilling Resistance (ASTM D3511) Class 4 min.
	Flammability CA Technical Bulletin 117-2013 Section 1
	Abrasion (ASTM D4157) 50,000 double rubs min. cotton duck

Sustainability



*Certification Marks owned by the Association for Contract Textiles, Inc.