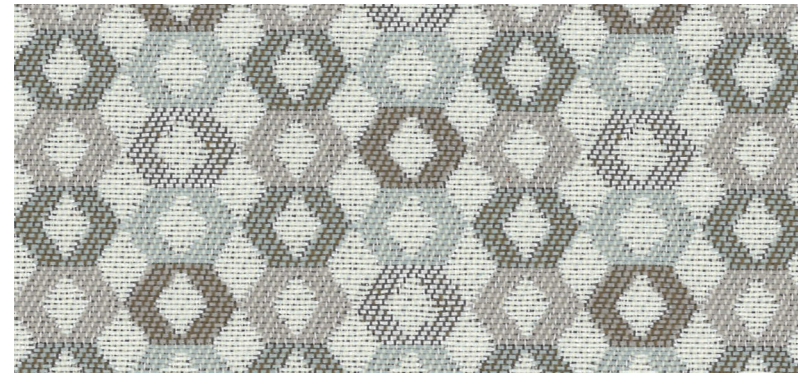


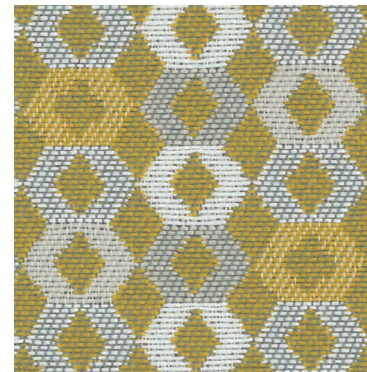
Rise 9569/9570  
Bleach Cleanable



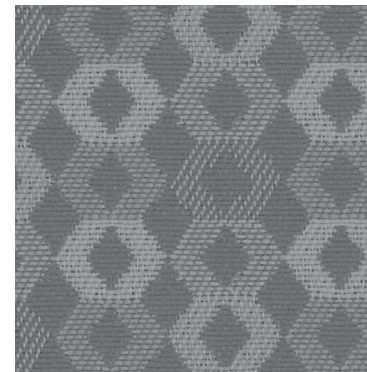
Frost  
9569-4010



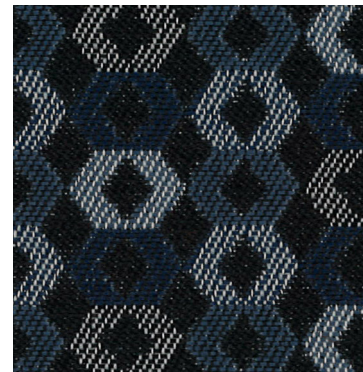
Rain Song  
9570-4021



Daybreak  
9570-4022



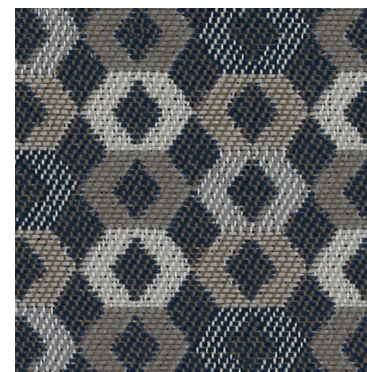
Fog  
9570-4020



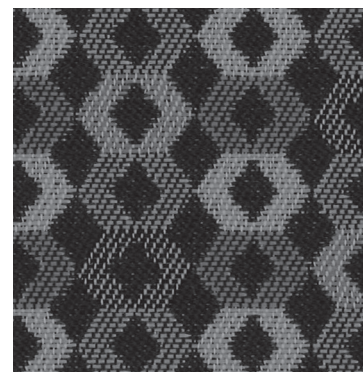
Night Sky  
9570-4041



Sunset  
9570-4030



Shadow  
9570-4031



Echo  
9570-4040

Rise 9569/9570  
Bleach Cleanable

Specifications

Content	100% post-consumer recycled biodegradable* polyester
Weight	13.6 ± 1.0 oz./lin. yd
Width	54" min. useable
Repeat	2.38" horizontal   1.63" vertical
Backing	biodegradable* acrylic backcoating
Treatment	CO stain water repellent

Cleaning Code

Standard Care Label W-S. Clean with water based cleaning agents, foam or pure, water free solvents. Vacuuming or light brushing is recommended to prevent dust and soil buildup.

**Bleach Cleanable** - May be cleaned with a 10% bleach-to-water solution. Rinse well after cleaning. May also be disinfected with hydrogen peroxide, alcohol, and quaternary ammonium (quat) based cleaners.

Miscellaneous

- Application testing of this product is recommended.
- Colors may vary between dye lots.
- This is a directional fabric.

Proudly woven in North America supporting our local communities.

Sustainability

BIODEGRADABLE\* CLEAN IMPACT TEXTILES® address the daunting problem of how to deal with polyester fabric at the end of its useful life.

Biodegradable\* in landfill after 1,278 days (tested under ASTM D5511)

\*Rate and extent of biodegradation into elements found in nature is 91% after 1,278 days under ASTM D5511 (Anaerobic Biodegradation of Plastic Materials Under High Solids Anaerobic Digestion Conditions). The test was done with the same component (PET) polyester and biocatalyst additive. No evidence of further degradation.

Performance

**Colorfastness to light (AATCC 16.3 Option 3)**  
Grade 4.5 min. at 40 hours

**Colorfastness to crocking (AATCC 8)**  
Grade 4.5 min. dry & Grade 4.5 min. wet

**Breaking Strength (ASTM D5034)**  
275 lbf min. warp and 419 lbf min. fill

**Seam Slippage (ASTM D4034)**  
38 lbf min. warp and 60 lbf min. fill

**Pilling Resistance (ASTM D3511)**  
Class 4.5 min.

**Flammability**  
CA Technical Bulletin 117-2013 Section 1  
NFPA 260-2013 Class I

**Abrasion (ASTM D4157)**  
75,000 double rubs min. cotton duck

\*Multiple factors affect fabric durability and appearance retention, including end-user application and proper maintenance. Wyzenbeek results above 100,000 double rubs have not been shown to be an indicator of increased lifespan.

Certification Marks owned by the Association for Contract Textiles, Inc.