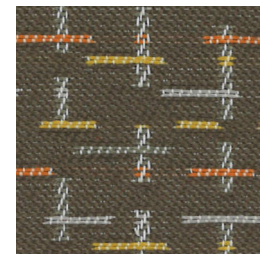
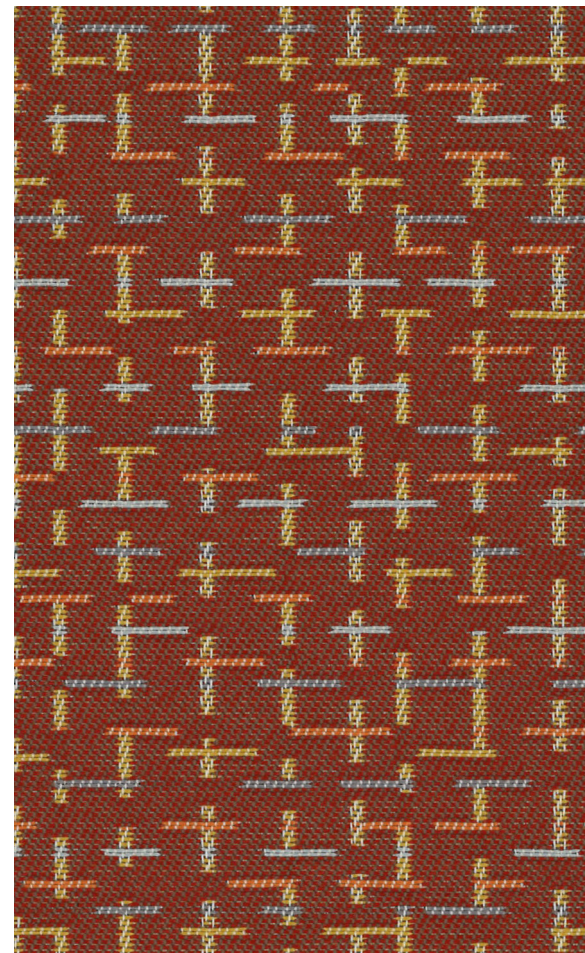
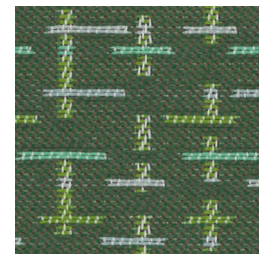


# Reframe 9571/9572

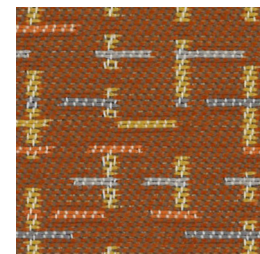
Bleach Cleanable



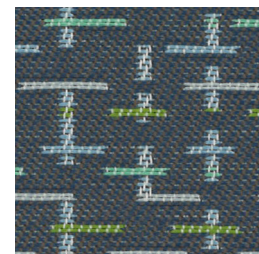
Toasted  
9572-4034



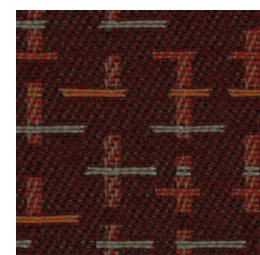
Matcha  
9572-4030



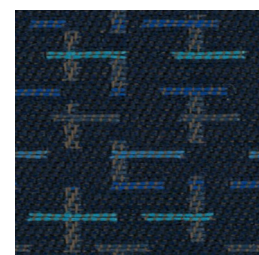
Turmeric  
9572-4032



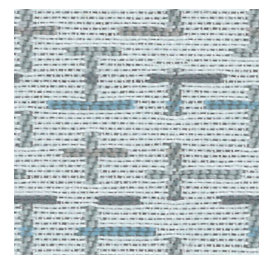
Serene  
9572-4031



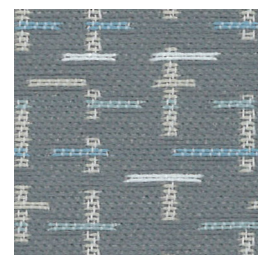
Nebbiolo  
9572-4042



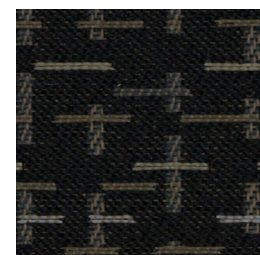
Blueberry  
9572-4041



Froth  
9571-4010



Vapor  
9572-4020



Black Sesame  
9572-4040

# Reframe 9571/9572

Bleach Cleanable

## Specifications

Content	100% post-consumer recycled biodegradable* polyester
Weight	13.5 ± 1.0 oz./lin. yd
Width	54" min. useable
Repeat	7.38" horizontal   5.88" vertical
Backing	biodegradable* acrylic backcoating
Treatment	CO stain water repellent

## Cleaning Code

Standard Care Label W-S. Clean with water based cleaning agents, foam or pure, water free solvents. Vacuuming or light brushing is recommended to prevent dust and soil buildup.

**Bleach Cleanable** - May be cleaned with a 10% bleach-to-water solution. Rinse well after cleaning. May also be disinfected with hydrogen peroxide, alcohol, and quaternary ammonium (quat) based cleaners.

## Miscellaneous

- Application testing of this product is recommended.
- Colors may vary between dye lots.
- This is a directional fabric.

Proudly woven in North America supporting our local communities.

## Sustainability

BIODEGRADABLE\* CLEAN IMPACT TEXTILES® address the daunting problem of how to deal with polyester fabric at the end of its useful life.

Biodegradable\* in landfill after 1,278 days (tested under ASTM D5511)

\*Rate and extent of biodegradation into elements found in nature is 91% after 1,278 days under ASTM D5511 (Anaerobic Biodegradation of Plastic Materials Under High Solids Anaerobic Digestion Conditions). The test was done with the same component (PET) polyester and biocatalyst additive. No evidence of further degradation.

## Performance

- Colorfastness to light (AATCC 16.3 Option 3)**  
Grade 4 min. at 40 hours
- Colorfastness to crocking (AATCC 8)**  
Grade 4 min. dry & Grade 4 min. wet
- Breaking Strength (ASTM D5034)**  
303 lbf min. warp and 325 lbf min. fill
- Seam Slippage (ASTM D4034)**  
120 lbf min. warp and 88 lbf min. fill
- Pilling Resistance (ASTM D3511)**  
Class 4 min.
- Flammability**  
CA Technical Bulletin 117-2013 Section 1  
NFPA 260-2013 Class I
- Abrasion (ASTM D4157)**  
75,000 double rubs min. cotton duck

\*Multiple factors affect fabric durability and appearance retention, including end-user application and proper maintenance. Wyzenbeek results above 100,000 double rubs have not been shown to be an indicator of increased lifespan.  
 Certification Marks owned by the Association for Contract Textiles, Inc.