

Amaze 2139

PANEL

PANEL

Amaze 2139

Specifications

Content	82% polyester 18% post-consumer recycled polyester
Weight	12.9 ± 1.0 oz./lin. yd.
Width	66" min. useable
Repeat	12.8" vertical 11.7" horizontal

Cleaning Code

Standard Care Label W-S. Clean with water based cleaning agents, foam or pure, water free solvents. Vacuuming or light brushing is recommended to prevent dust and soil buildup. May also be disinfected with hydrogen peroxide, alcohol, and quaternary ammonium (quat) based cleaners.





Miscellaneous

Proudly woven in North America supporting our local communities.

Application testing of this product is recommended. Colors may vary between dye lots. This is a directional fabric.

Visit guilfordofmaine.com for samples.

Performance

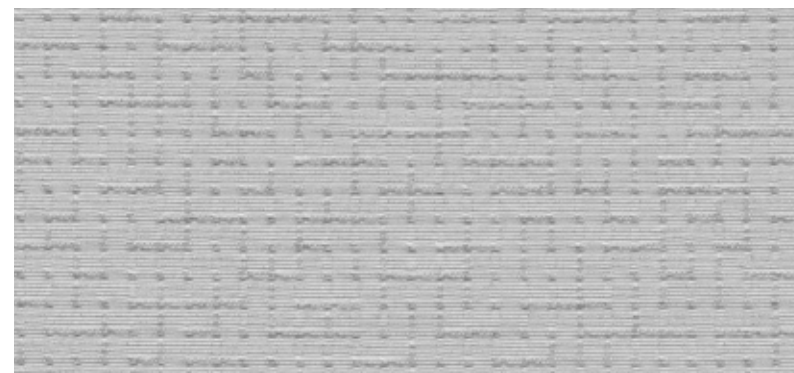
-  Colorfastness to Light (AATCC 16.3 Option 3)
Grade 4 min. at 40 hours
-  Colorfastness to Crocking (AATCC 8)
Grade 4 min. dry & Grade 3 min. wet
-  Breaking Strength (ASTM D5034)
290 lbf min. warp and 230 lbf min. fill
-  Flammability (ASTM E84)
Class I or A

Sustainability

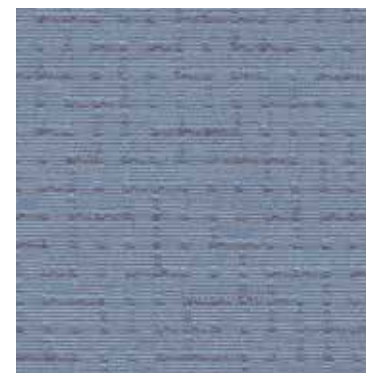


 This pattern is included in the underwriters laboratory panel fabric recognition program. Additional testing of this U.L. recognized component fabric is not required on approved panels from participating manufacturers.

*Certification Marks owned by the Association for Contract Textiles, Inc.



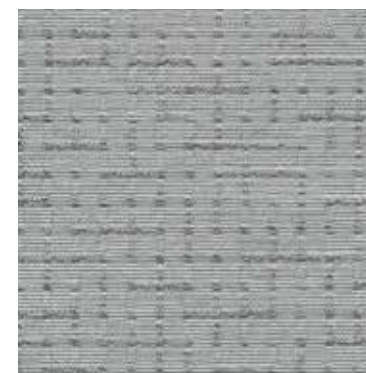
Platinum
1260



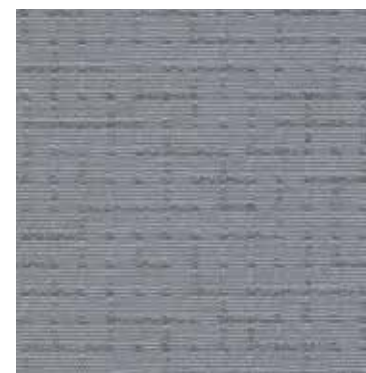
Sky
1268



Bone
1262



Fog
1265



Steel
1266



Dune
1263



Morel
1264



Flannel
1267