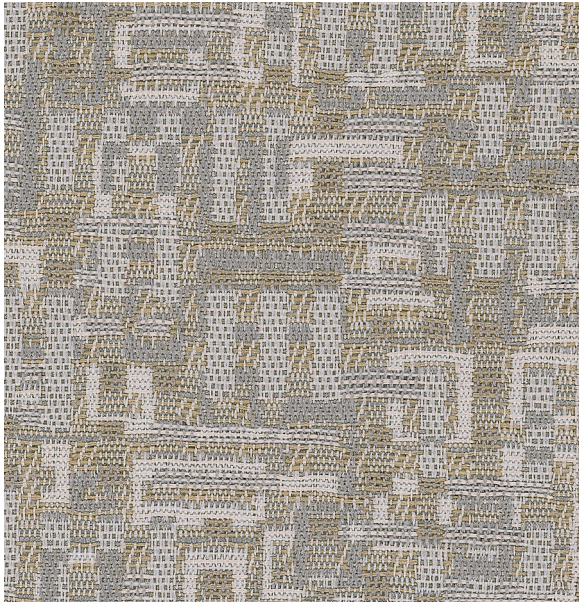
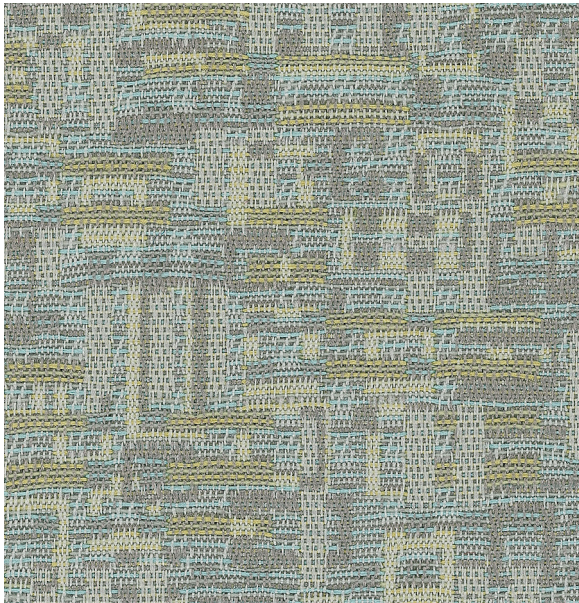


Block Party 2538

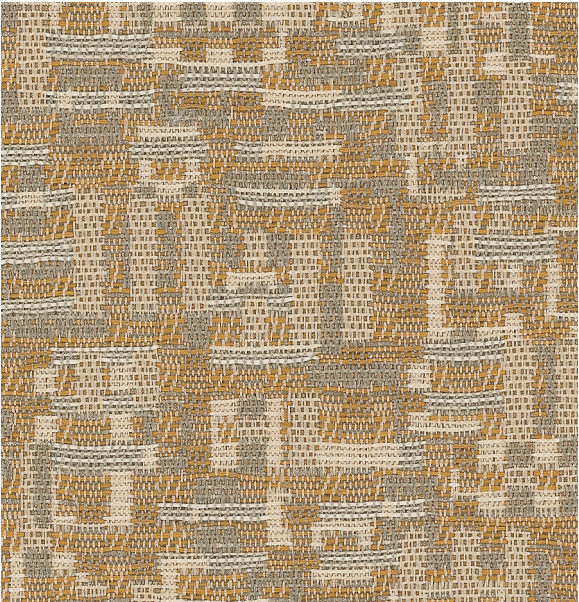
PANEL | ACOUSTIC



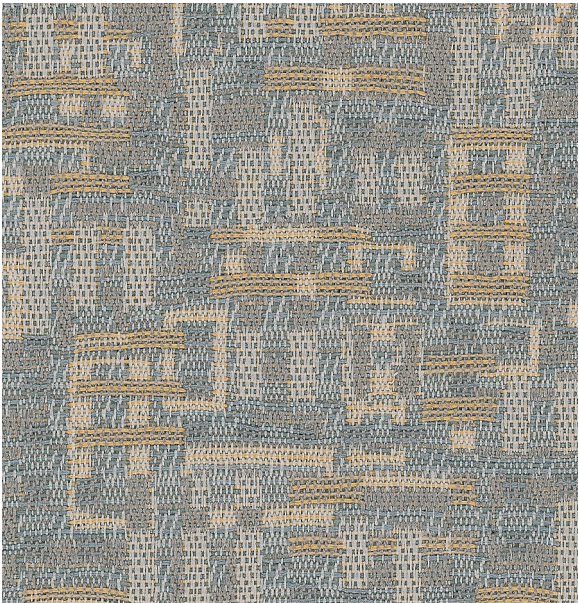
Pebble
011



Isle
010



Canyon
021



Oasis
013

Block Party 2538

PANEL | ACOUSTIC

Specifications

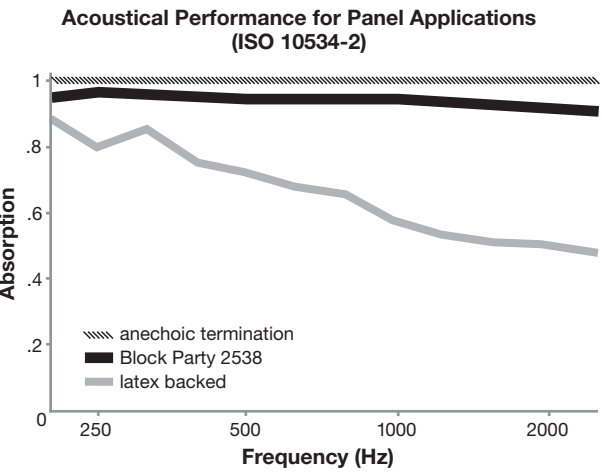
Content	74% pre-consumer recycled polyester 26% post-consumer recycled polyester
Weight	12.6 ± 1.0 oz./lin. yd.
Width	66" min. useable
Repeat	12.9" vertical 13.9" horizontal

Cleaning Code

Standard Care Label W-S. Clean with water based cleaning agents, foam or pure, water free solvents. Vacuuming or light brushing is recommended to prevent dust and soil buildup. May also be disinfected with hydrogen peroxide, alcohol, and quaternary ammonium (quat) based cleaners.

Acoustical Performance

The plot below summarizes impedance tube measurements of absorption of an anechoic termination and various fabrics in front of the anechoic termination.



NRC of anechoic termination	1.00
NRC of fabric in front of anechoic termination	.95

Performance

	Colorfastness to Light (AATCC 16.3 Option 3) Grade 4 min. at 40 hours
	Colorfastness to Crocking (AATCC 8) Grade 4 min. dry & Grade 3 min. wet
	Breaking Strength (ASTM D5034) 250 lbf min. warp and 150 lbf min. fill
	Flammability (ASTM E84) Class I or A

Sustainability

	100% recycled and recyclable Terratex is a registered trademark of Duvaltex
	facts™ Silver

Miscellaneous

Proudly woven in North America supporting our local communities.

Application testing of this product is recommended. Colors may vary between dye lots. This is a directional fabric.

Visit [guilfordofmaine.com](https://www.guilfordofmaine.com) for samples.

This pattern is included in the underwriters laboratory panel fabric recognition program. Additional testing of this U.L. recognized component fabric is not required on approved panels from participating manufacturers.

*Certification Marks owned by the Association for Contract Textiles, Inc.