

Chase 2138

Chase 2138

Specifications

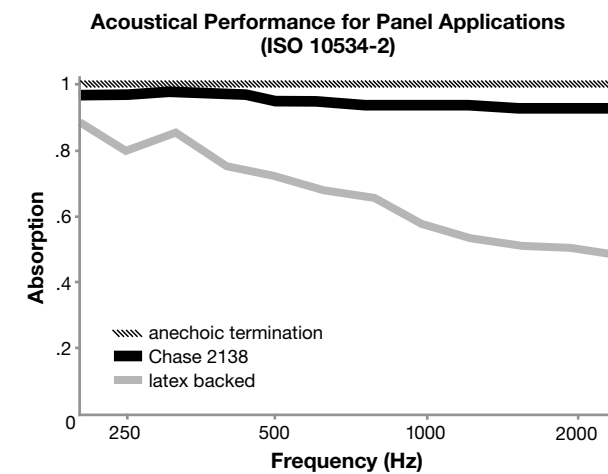
Content	74% polyester 26% post-consumer recycled polyester
Weight	13.3 ± 1.0 oz./lin. yd.
Width	66" min. useable
Repeat	None
Treatment	polyester binder

Cleaning Code

Standard Care Label W-S. Clean with water based cleaning agents, foam or pure, water free solvents. Vacuuming or light brushing is recommended to prevent dust and soil buildup. May also be disinfected with hydrogen peroxide, alcohol, and quaternary ammonium (quat) based cleaners.

Acoustical Performance

The plot below summarizes impedance tube measurements of absorption of an anechoic termination and various fabrics in front of the anechoic termination.



NRC of anechoic termination	1.00
NRC of fabric in front of anechoic termination	0.95

Performance

- Colorfastness to Light (AATCC 16.3 Option 3)
Grade 4 min. at 40 hours
- Colorfastness to Crocking (AATCC 8)
Grade 4 min. dry & Grade 3 min. wet
- Breaking Strength (ASTM D5034)
280 lbf min. warp and 200 lbf min. fill
- Flammability (ASTM E84)
Class I or A

Sustainability



Miscellaneous

Proudly woven in North America supporting our local communities.

Application testing of this product is recommended. Colors may vary between dye lots. This is a directional fabric.

Visit guilfordofmaine.com for samples.

This pattern is included in the underwriters laboratory panel fabric recognition program. Additional testing of this U.L. recognized component fabric is not required on approved panels from participating manufacturers.

*Certification Marks owned by the Association for Contract Textiles, Inc.



Buff
1242



Ochre
1251



Red Clay
1252



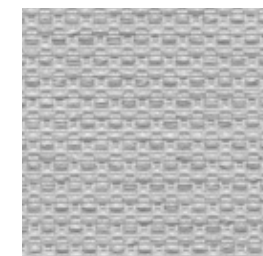
Chambray
1249



Moss
1250



Coin
1243



Shadow
1246



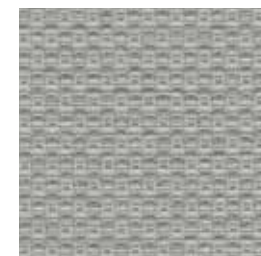
Pewter
1247



Pumice
1248



Ecrú
1241



Mist Green
1244



Mushroom
1245