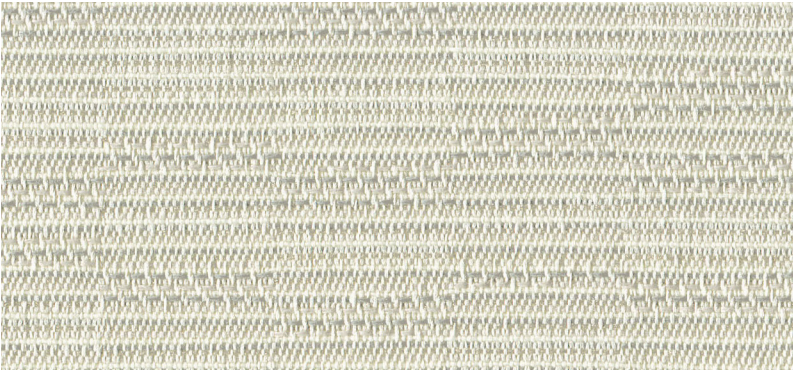


Hatchet 2977



Baton
010



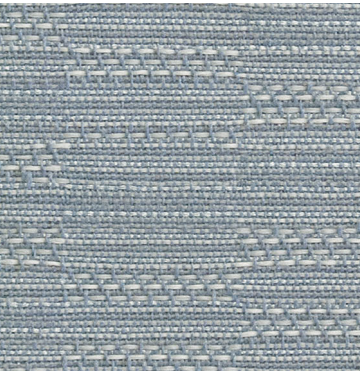
Scythe
030



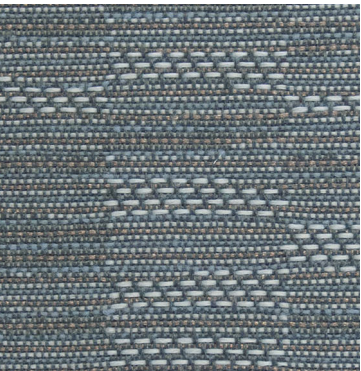
Dirk
050



Brass
020



Axe
040



Smoke
061



Armament
031



Blackjack
060

Hatchet 2977

Specifications

Content	86% pre-consumer recycled polyester 14% post-consumer recycled polyester
Weight	12.1 ± 1.0 oz./lin. yd.
Width	66" min. useable
Repeat	11" vertical 16.4" horizontal

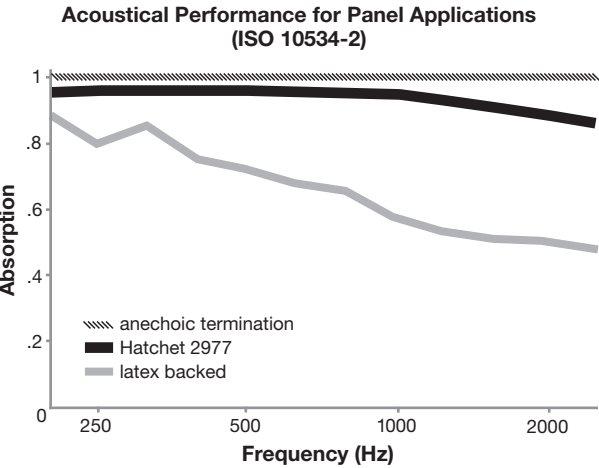
Cleaning Code

Standard Care Label W-S. Clean with water based cleaning agents, foam or pure, water free solvents. Vacuuming or light brushing is recommended to prevent dust and soil buildup.

Bleach Cleanable - May be cleaned with a 10% bleach-to-water solution. Rinse well after cleaning. May also be disinfected with hydrogen peroxide, alcohol, and quaternary ammonium (quat) based cleaners.

Acoustical Performance

The plot below summarizes impedance tube measurements of absorption of an anechoic termination and various fabrics in front of the anechoic termination.



NRC of anechoic termination	1.00
NRC of fabric in front of anechoic termination	.95

Performance

	Colorfastness to Light (AATCC 16.3 Option 3) Grade 4 min. at 40 hours
	Colorfastness to Crocking (AATCC 8) Grade 4 min. dry & Grade 3 min. wet
	Breaking Strength (ASTM D5034) 200 lbf min. warp and 150 lbf min. fill
	Flammability (ASTM E84) Class I or A

Sustainability

	100% recycled and recyclable Terratec is a registered trademark of Duvaltex
	facts [™] Compliant

Miscellaneous

Proudly woven in North America supporting our local communities.

Application testing of this product is recommended. Colors may vary between dye lots. This is a directional fabric.

Visit [guilfordofmaine.com](https://www.guilfordofmaine.com) for samples.

This pattern is included in the underwriters laboratory panel fabric recognition program. Additional testing of this U.L. recognized component fabric is not required on approved panels from participating manufacturers.

*Certification Marks owned by the Association for Contract Textiles, Inc.