

Metallation 5118

Metallation 5118



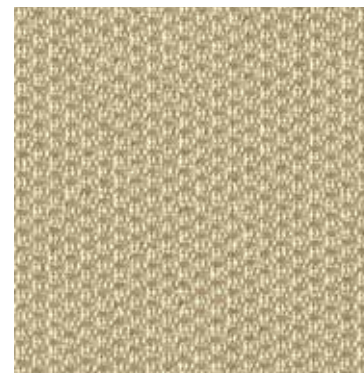
Chrome
1676



Stainless
1625



Polished Pewter
1678



Etched Bronze
1623



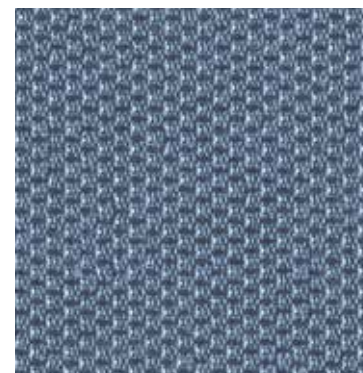
Welded Steel
1677



Dark Annealed
1629



18 Karat
1627



Fired Titanium
1633



Stove Pipe
1628

Specifications

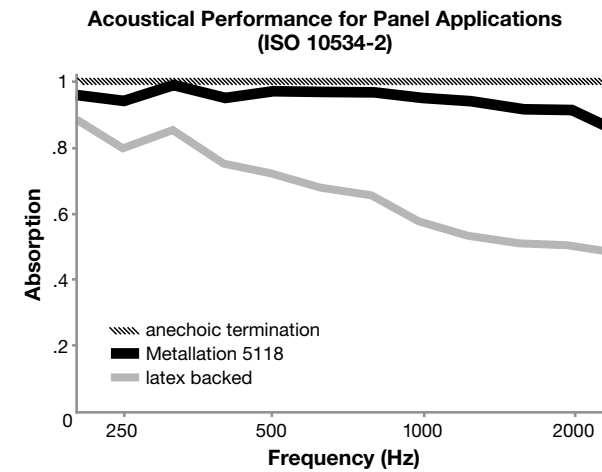
Content	56% post-consumer recycled polyester 44% polyester
Weight	15.2 ± 0.5 oz./lin. yd.
Width	66" min. useable
Repeat	none

Cleaning Code

Standard Care Label W-S. Clean with water based cleaning agents, foam or pure, water free solvents. Vacuuming or light brushing is recommended to prevent dust and soil buildup. May also be disinfected with hydrogen peroxide, alcohol, and quaternary ammonium (quat) based cleaners.

Acoustical Performance

The plot below summarizes impedance tube measurements of absorption of an anechoic termination and various fabrics in front of the anechoic termination.



NRC of anechoic termination	1.00
NRC of fabric in front of anechoic termination	.95

Performance

- Colorfastness to Light (AATCC 16.3 Option 3)
Grade 4 min. at 40 hours
- Colorfastness to Crocking (AATCC 8)
Grade 4 min. dry & Grade 3 min. wet
- Breaking Strength (ASTM D5034)
150 lbf min. warp and fill
- Flammability (ASTM E84)
Class I or A

Miscellaneous

Proudly woven in North America supporting our local communities.
Application testing of this product is recommended.
Colors may vary between dye lots. This is a directional fabric.

Visit guilfordofmaine.com for samples.

This pattern is included in the underwriters laboratory panel fabric recognition program. Additional testing of this U.L. recognized component fabric is not required on approved panels from participating manufacturers.

*Certification Marks owned by the Association for Contract Textiles, Inc.