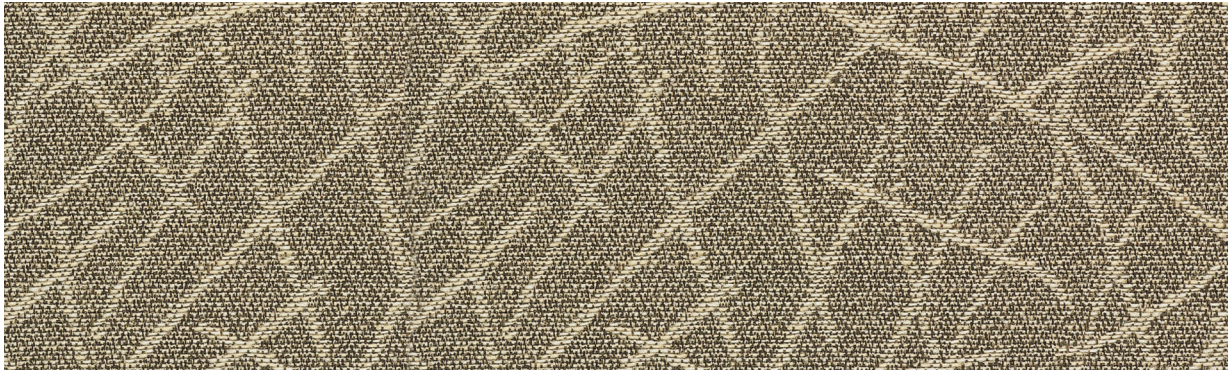


Network 4158

PANEL | ACOUSTIC



Putty
031



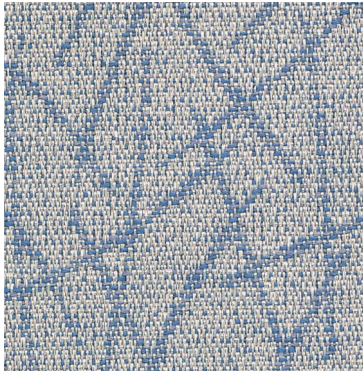
Frost
020



Zinc
060



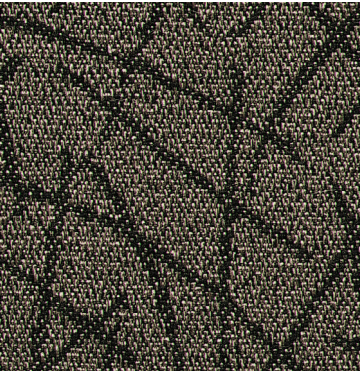
Hickory
011



Harbor
070



Mocha
052



Cappuccino
030

Network 4158

PANEL | ACOUSTIC

Specifications

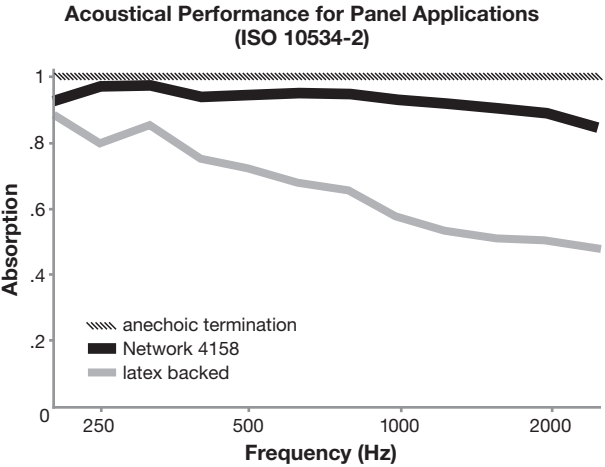
Content	100% post-consumer recycled polyester
Weight	11.0 ± 1.0 oz./lin. yd.
Width	66" min. useable
Repeat	11.875" vertical 16.375" horizontal

Cleaning Code

Standard Care Label W-S. Clean with water based cleaning agents, foam or pure, water free solvents. Vacuuming or light brushing is recommended to prevent dust and soil buildup. May also be disinfected with hydrogen peroxide, alcohol, and quaternary ammonium (quat) based cleaners.

Acoustical Performance

The plot below summarizes impedance tube measurements of absorption of an anechoic termination and various fabrics in front of the anechoic termination.



NRC of anechoic termination	1.00
NRC of fabric in front of anechoic termination	.95

Performance

	Colorfastness to Light (AATCC 16.3 Option 3) Grade 4 min. at 40 hours
	Colorfastness to Crocking (AATCC 8) Grade 4 min. dry & Grade 3 min. wet
	Breaking Strength (ASTM D5034) 190 lbf min. warp and 95 lbf min. fill
	Flammability (ASTM E84) Class I or A

Sustainability

	100% recycled and recyclable Terratex is a registered trademark of Duvaltex
	facts™ Silver

Miscellaneous

Proudly woven in North America supporting our local communities.

Application testing of this product is recommended. Colors may vary between dye lots. This is a directional fabric.

Visit [guilfordofmaine.com](https://www.guilfordofmaine.com) for samples.

This pattern is included in the underwriters laboratory panel fabric recognition program. Additional testing of this U.L. recognized component fabric is not required on approved panels from participating manufacturers.

*Certification Marks owned by the Association for Contract Textiles, Inc.