

Palette 2155

*to order with Crypton add a "C" to the color number



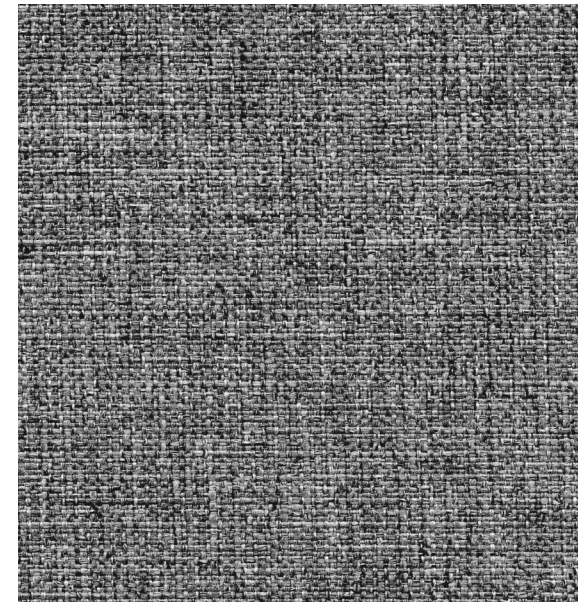
Acorn
1137



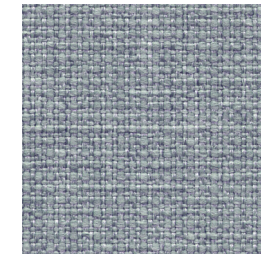
Cutch
1135



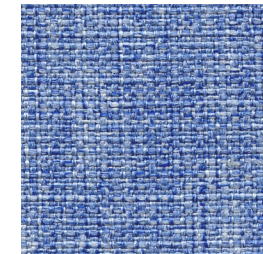
Chamomile
1131



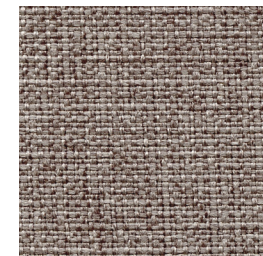
Birch Bark
1133



Alkanet
1132



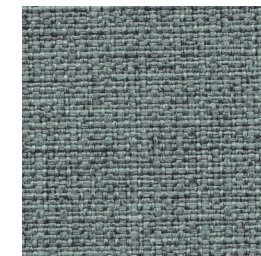
Cornflower
1151



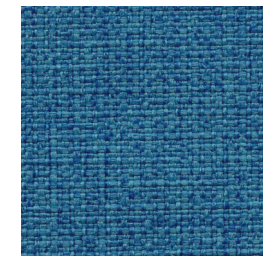
Alder
1136



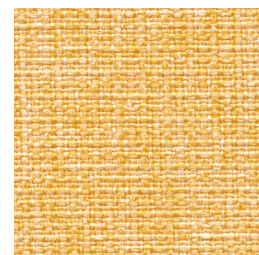
Artichoke
1145



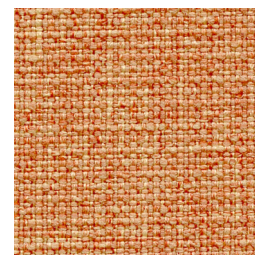
Lichen
1149



Saxon Blue
1150



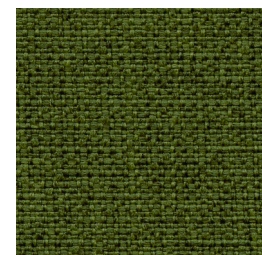
Sunflower
1144



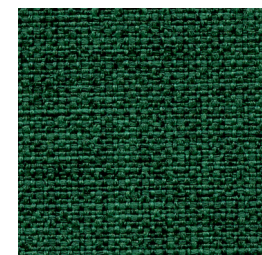
Sandalwood
1143



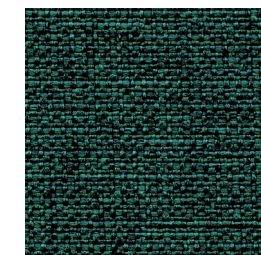
Annatto
1142



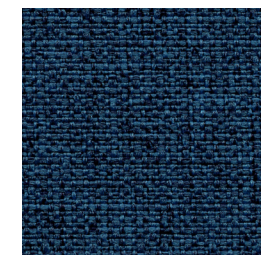
Sorrel
1146



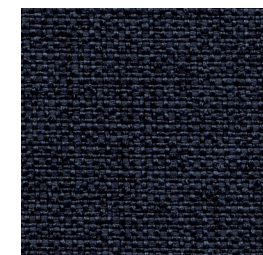
Spinach
1147



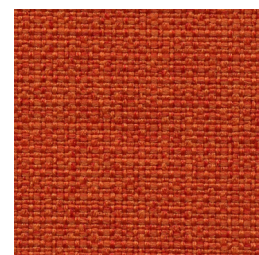
Nettle
1148



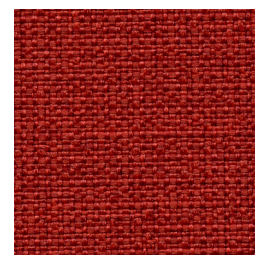
Indigo
1152



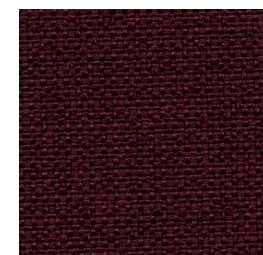
Knotweed
1153



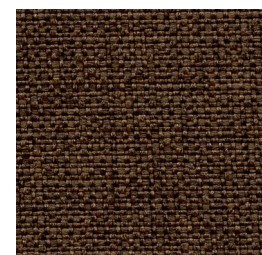
Paprika
1141



Sumac
1140



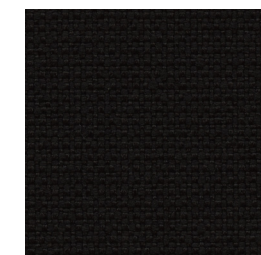
Murex
1139



Walnut
1138



Iron
1134



Logwood
1154

Palette 2155

AVAILABLE WITH
 AND WITHOUT CRYPTON*

Specifications

Content	100% polyester
Weight	12 +/-1 oz per linear yard
Width	54" min. useable
Repeat	none
Backing	Crypton moisture barrier
Treatment	Crypton stain resistance Crypton odor resistance

How to order Palette with Crypton

When ordering with Crypton add a "C" to the color number.
 ex.: 2155-1137C Acorn = with Crypton

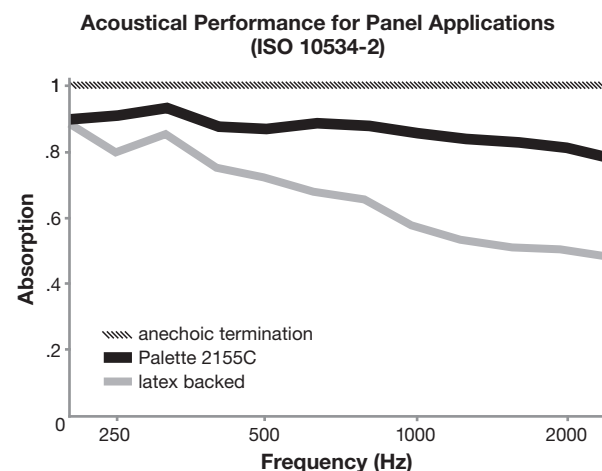
Specifications and performance available on request.

Cleaning Code

Standard Care Label W-S. Clean with water based cleaning agents, foam or pure, water free solvents. Vacuuming or light brushing is recommended to prevent dust and soil buildup. May also be disinfected with hydrogen peroxide, alcohol, and quaternary ammonium (quat) based cleaners.

Acoustical Performance

The plot below summarizes impedance tube measurements of absorption of an anechoic termination and various fabrics in front of the anechoic termination.



NRC of anechoic termination	1.00
NRC of fabric in front of anechoic termination	.90

Performance

	Colorfastness to Light (AATCC 16.3 Option 3) Grade 4 min. at 40 hours
	Colorfastness to Crocking (AATCC 8) Grade 4 min. dry & Grade 3 min. wet
	Breaking Strength (ASTM D5034) 295 lbf min. warp and 280 lbf fill
	Seam Slippage (ASTM D4034) 85 lbf min. warp and 75 lbf fill
	Pilling Resistance (ASTM D3511) Class 4 min.
	Flammability (ASTM E84) Class I or A
	Abrasion (ASTM D4157) 100,000 double rubs min. cotton duck

Sustainability



Miscellaneous

Proudly made in North America supporting our local communities.

Application testing of this product is recommended.
 Colors may vary between dye lots.

Visit guilfordofmaine.com for samples.

This pattern is included in the underwriters laboratory panel fabric recognition program. Additional testing of this U.L. recognized component fabric is not required on approved panels from participating manufacturers.

*Multiple factors affect fabric durability and appearance retention, including end-user application and proper maintenance. Wyzenbeek results above 100,000 double rubs have not been shown to be an indicator of increased lifespan.

Certification Marks owned by the Association for Contract Textiles, Inc.