

# Palette 2155

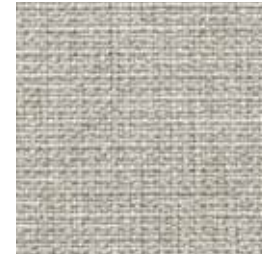
MULTI-PURPOSE | UPHOLSTERY  
PANEL | ACOUSTIC



**Acorn**  
1137



**Cutch**  
1135



**Chamomile**  
1131



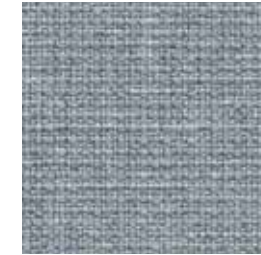
**Alder**  
1136



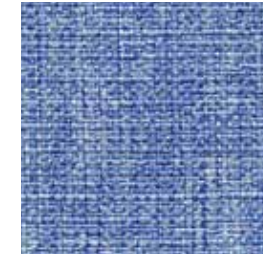
**Artichoke**  
1145



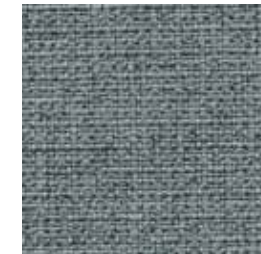
**Birch Bark**  
1133



**Alkanet**  
1132



**Cornflower**  
1151



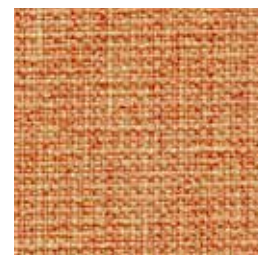
**Lichen**  
1149



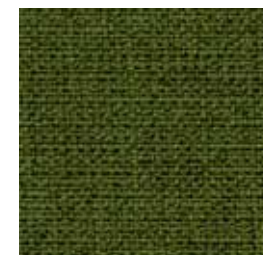
**Saxon Blue**  
1150



**Sunflower**  
1144



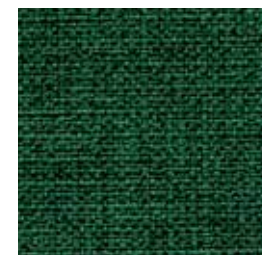
**Sandalwood**  
1143



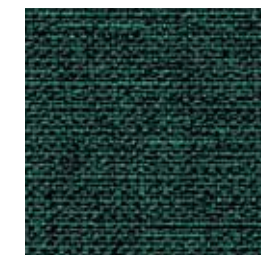
**Annatto**  
1142



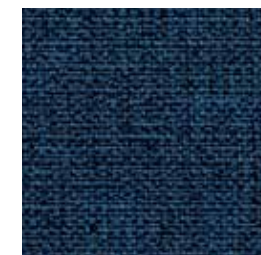
**Sorrel**  
1146



**Spinach**  
1147



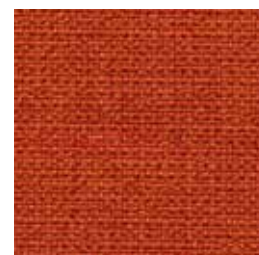
**Nettle**  
1148



**Indigo**  
1152



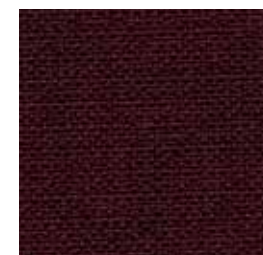
**Knotweed**  
1153



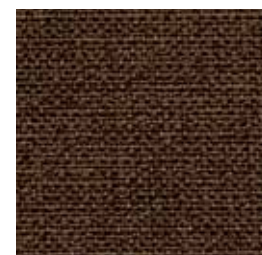
**Paprika**  
1141



**Sumac**  
1140



**Murex**  
1139



**Walnut**  
1138



**Iron**  
1134



**Logwood**  
1154

# Palette 2155

## Specifications

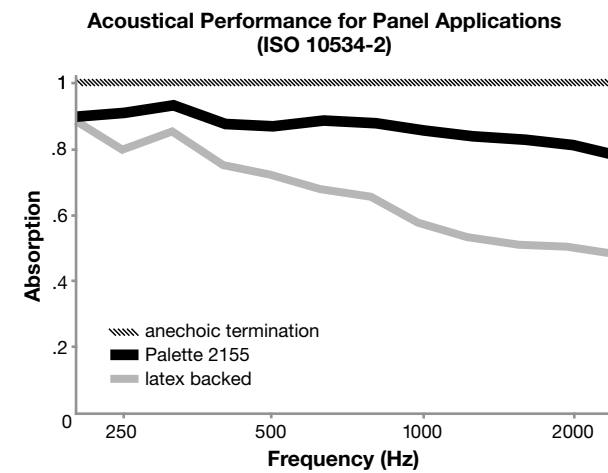
Content	<b>100% polyester</b>
Weight	<b>12 +/-1 oz per linear yard</b>
Width	<b>54" min. useable</b>
Repeat	<b>none</b>

## Cleaning Code

Standard Care Label W-S. Clean with water based cleaning agents, foam or pure, water free solvents. Vacuuming or light brushing is recommended to prevent dust and soil buildup. May also be disinfected with hydrogen peroxide, alcohol, and quaternary ammonium (quat) based cleaners.


## Acoustical Performance

The plot below summarizes impedance tube measurements of absorption of an anechoic termination and various fabrics in front of the anechoic termination.




NRC of anechoic termination	<b>1.00</b>
NRC of fabric in front of anechoic termination	<b>.90</b>


## Performance

-  Colorfastness to Light (AATCC 16.3 Option 3)  
**Grade 4 min. at 40 hours**

---

-  Colorfastness to Crocking (AATCC 8)  
**Grade 4 min. dry & Grade 3 min. wet**

---

-  Breaking Strength (ASTM D5034)  
**295 lbf min. warp and 280 lbf fill**


---

- Seam Slippage (ASTM D4034)  
**85 lbf min. warp and 75 lbf fill**


---

- Pilling Resistance (ASTM D3511)  
**Class 4 min.**

---

-  Flammability (ASTM E84)  
**Class I or A**

---

-  Abrasion (ASTM D4157)  
**100,000 double rubs min. cotton duck**

## Sustainability



## Miscellaneous

Proudly made in North America supporting our local communities.

Application testing of this product is recommended. Colors may vary between dye lots.

Visit [guilfordofmaine.com](http://guilfordofmaine.com) for samples.

 This pattern is included in the underwriters laboratory panel fabric recognition program. Additional testing of this U.L. recognized component fabric is not required on approved panels from participating manufacturers.

\*Multiple factors affect fabric durability and appearance retention, including end-user application and proper maintenance. Wyzenbeek results above 100,000 double rubs have not been shown to be an indicator of increased lifespan.  
 Certification Marks owned by the Association for Contract Textiles, Inc.