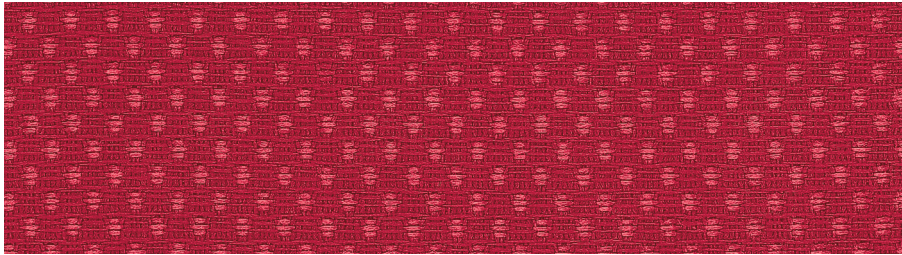
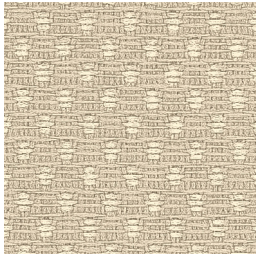


# Streetwise 2721

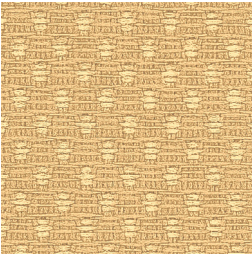
PANEL | ACOUSTIC



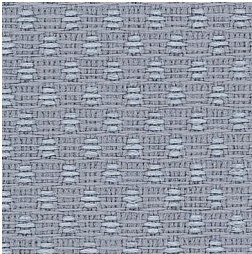
Stop Sign  
1891



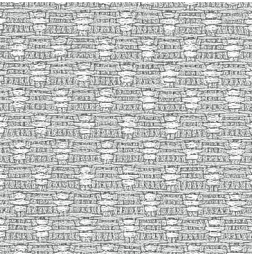
Crosswalk  
1901



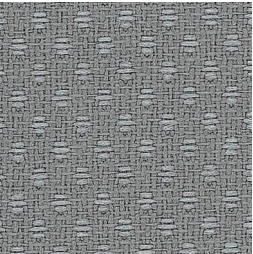
Taxi  
1881



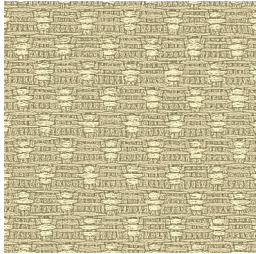
Light Rail  
1885



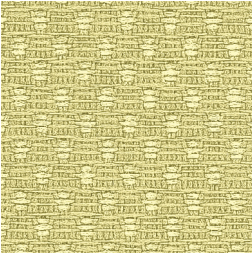
News Stand  
1884



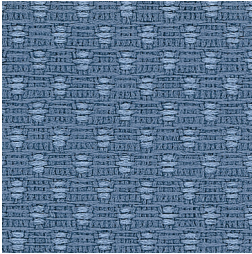
Parking Meter  
1886



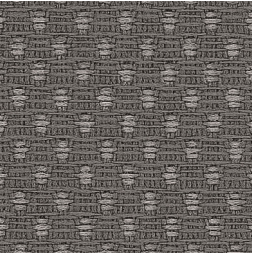
Doughnut Shop  
1882



Hydrant  
1883



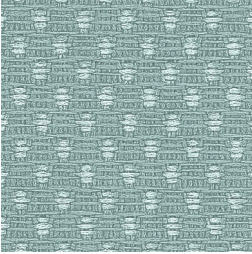
Mailbox  
1890



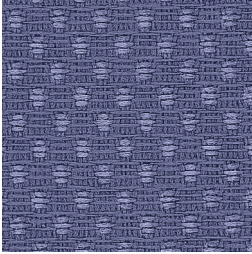
Pavement  
1894



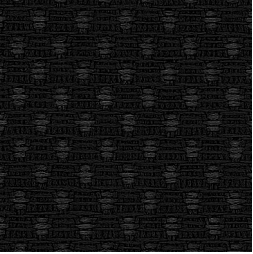
Pigeon  
1893



Commuter  
1887



Pedestrian  
1892



Asphalt  
718

# Streetwise 2721

PANEL | ACOUSTIC

### Specifications

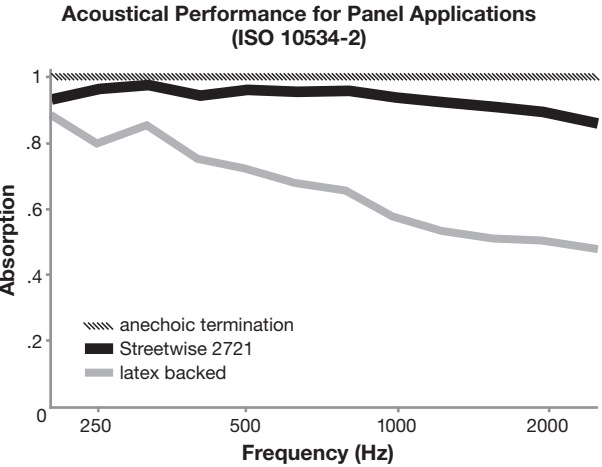
Content	78% pre-consumer recycled polyester 22% post-consumer recycled polyester
Weight	13.0 ± 1.0 oz./lin. yd.
Width	66" min. useable
Repeat	none

### Cleaning Code

Standard Care Label W-S. Clean with water based cleaning agents, foam or pure, water free solvents. Vacuuming or light brushing is recommended to prevent dust and soil buildup. May also be disinfected with hydrogen peroxide, alcohol, and quaternary ammonium (quat) based cleaners.

### Acoustical Performance

The plot below summarizes impedance tube measurements of absorption of an anechoic termination and various fabrics in front of the anechoic termination.



NRC of anechoic termination	1.00
NRC of fabric in front of anechoic termination	.95

### Performance

	Colorfastness to Light (AATCC 16.3 Option 3) Grade 4 min. at 40 hours
	Colorfastness to Crocking (AATCC 8) Grade 4 min. dry & Grade 3 min. wet
	Breaking Strength (ASTM D5034) 220 lbf min. warp and 180 lbf min. fill
	Flammability (ASTM E84) Class I or A

### Sustainability

**100% recycled and recyclable**  
Terratex is a registered trademark of Duvaltex

### Miscellaneous

Proudly woven in North America supporting our local communities.

Application testing of this product is recommended. Colors may vary between dye lots. This is a directional fabric.

Visit [guilfordofmaine.com](http://guilfordofmaine.com) for samples.

This pattern is included in the underwriters laboratory panel fabric recognition program. Additional testing of this U.L. recognized component fabric is not required on approved panels from participating manufacturers.

\*Certification Marks owned by the Association for Contract Textiles, Inc.