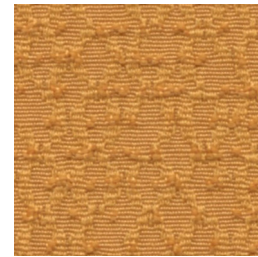


Synopsis 2136

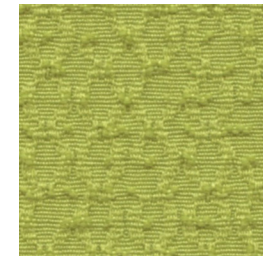
Synopsis 2136



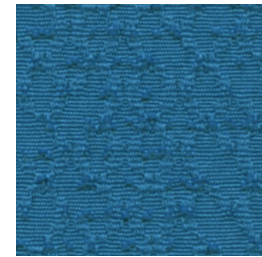
Bisque
1212



Butterscotch
1213



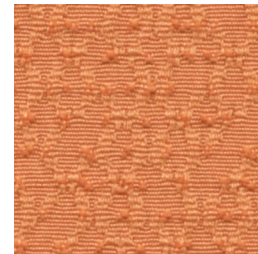
Chartreuse
1214



Cerulean
1218



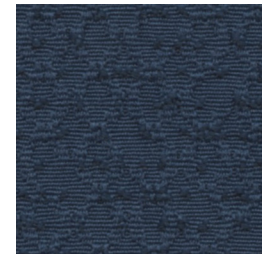
Taupe
1211



Blush
1215



Jade
1220



Blue Marine
1219



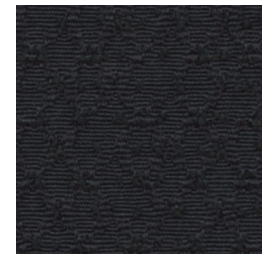
Ash
1210



Poppy
1216



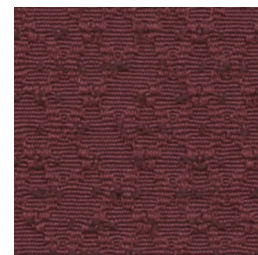
Pine
1221



Ebony
1223



Flannel
1222



Burgundy
1217

Specifications

Content	52% post-consumer recycled polyester 48% pre-consumer recycled polyester
Weight	10.6 ± 1.0 oz./lin. yd.
Width	54" min. useable
Repeat	7.25" vertical 4.25" horizontal

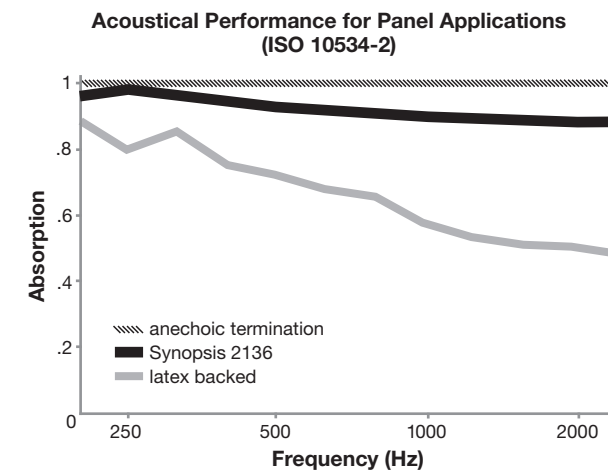
Cleaning Code

Standard Care Label W-S. Clean with water based cleaning agents, foam or pure, water free solvents. Vacuuming or light brushing is recommended to prevent dust and soil buildup.

Bleach Cleanable - May be cleaned with a 10% bleach-to-water solution. Rinse well after cleaning. May also be disinfected with hydrogen peroxide, alcohol, and quaternary ammonium (quat) based cleaners.

Acoustical Performance

The plot below summarizes impedance tube measurements of absorption of an anechoic termination and various fabrics in front of the anechoic termination.



NRC of anechoic termination	1.00
NRC of fabric in front of anechoic termination	.90

Performance

- Colorfastness to Light (AATCC 16.3 Option 3)
Grade 4 min. at 40 hours
- Colorfastness to Crocking (AATCC 8)
Grade 4 min. dry & Grade 3 min. wet
- Breaking Strength (ASTM D5034)
295 lbf warp and 180 lbf fill
- Seam Slippage (ASTM D4034)
115 lbf warp and 110 lbf fill
- Pilling Resistance (ASTM D3511)
Class 4
- Flammability
**CA Technical Bulletin 117-2013 Section 1
ASTM E84 Class I or A**
- Abrasion (ASTM D4157)
100,000 double rubs cotton duck

Sustainability

- 100% recycled and recyclable**
Terratec is a registered trademark of Duvaltex
- facts™ Gold**

Miscellaneous

Proudly woven in North America supporting our local communities.

Application testing of this product is recommended. Colors may vary between dye lots. This is a directional fabric.

Visit guilfordofmaine.com for samples.

This pattern is included in the underwriters laboratory panel fabric recognition program. Additional testing of this U.L. recognized component fabric is not required on approved panels from participating manufacturers.

*Certification Marks owned by the Association for Contract Textiles, Inc.