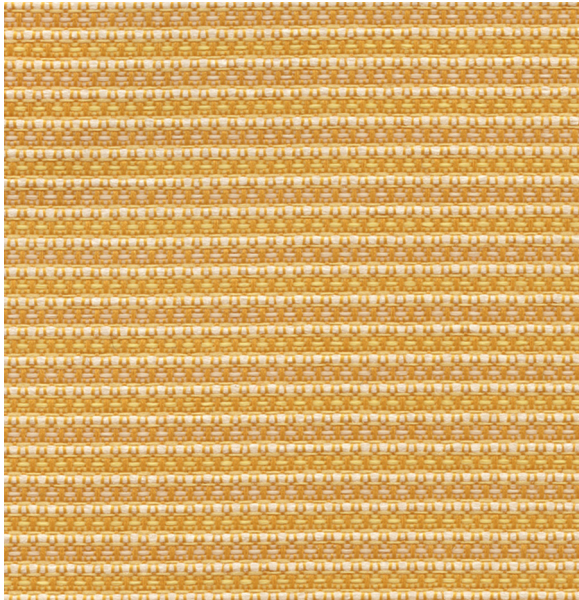


Adept 9882

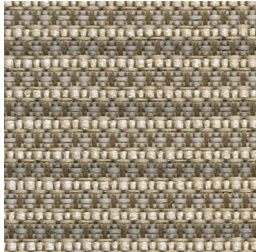
UPHOLSTERY

Adept 9882

UPHOLSTERY



Brilliant
5010



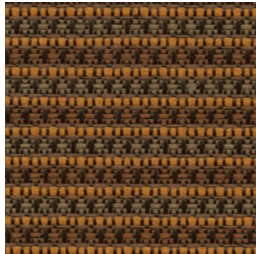
Skill
5030



Polished
5040



Gifted
5031



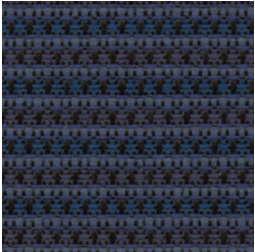
Expert
5041



Clever
5042



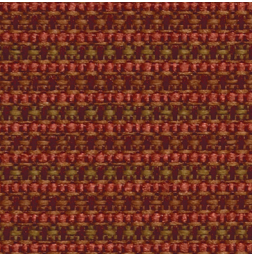
Savvy
5043



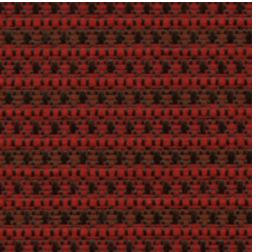
Cool
5048



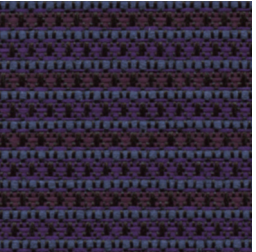
Cunning
5045



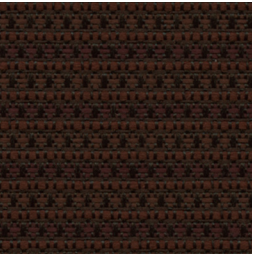
Alert
5020



Hotshot
5046



Keen
5044



Virtuoso
5047

Specifications

| | |
|-----------|---|
| Content | 68% pre-consumer recycled polyester 32% post-consumer recycled polyester |
| Weight | 11.4 ± 1.0 oz./lin. yd. |
| Width | 54" min. useable |
| Repeat | .3125" vertical none horizontal |
| Backing | acrylic backcoating |
| Treatment | stain repellent |

Cleaning Code

Standard Care Label W-S. Clean with water based cleaning agents, foam or pure, water free solvents. Vacuuming or light brushing is recommended to prevent dust and soil buildup.

Bleach Cleanable - May be cleaned with a 10% bleach-to-water solution. Rinse well after cleaning. May also be disinfected with hydrogen peroxide, alcohol, and quaternary ammonium (quat) based cleaners.






Miscellaneous

Proudly woven in North America supporting our local communities.

Application testing of this product is recommended. Colors may vary between dye lots. This is a directional fabric.

Visit guilfordofmaine.com for samples.

Performance

| | |
|---|---|
|  | Colorfastness to Light (AATCC 16.3 Option 3) Grade 4 min. at 40 hours |
|  | Colorfastness to Crocking (AATCC 8) Grade 4 min. dry & Grade 3 min. wet |
|  | Breaking Strength (ASTM D5034) 140 lbf warp and 240 lbf fill |
| | Seam Slippage (ASTM D4034) 50 lbf warp and fill |
| | Pilling Resistance (ASTM D3511) Class 4 min. |
|  | Flammability CA Technical Bulletin 117-2013 Section 1 |
|  | Abrasion (ASTM D4157) 50,000 double rubs cotton duck |

Sustainability



*Certification Marks owned by the Association for Contract Textiles, Inc.