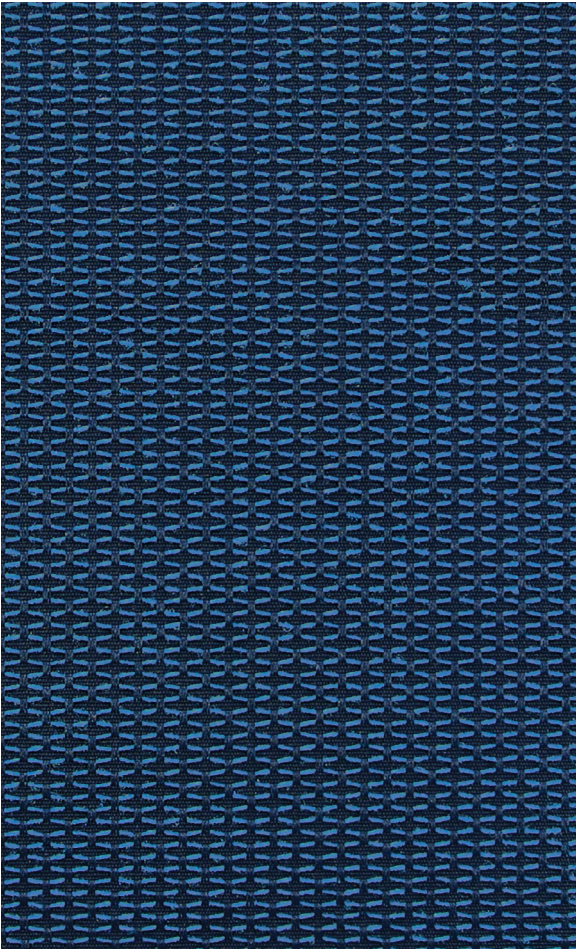


Beacon
9256

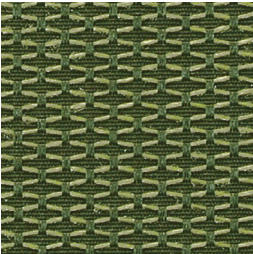
MULTI-PURPOSE
UPHOLSTERY | PANEL

Beacon 9256

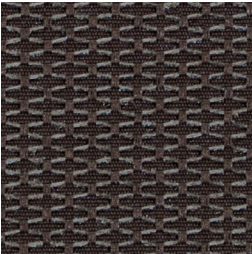
MULTI-PURPOSE
UPHOLSTERY | PANEL



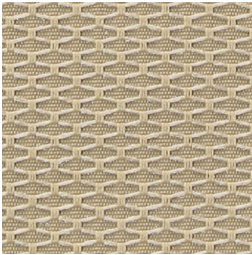
Sky
080



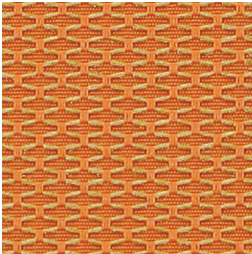
Spring
070



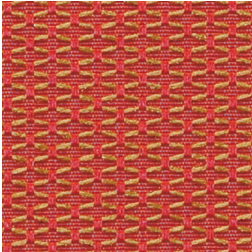
Chocolate
090



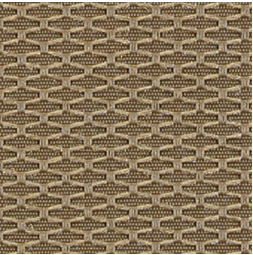
Birch
010



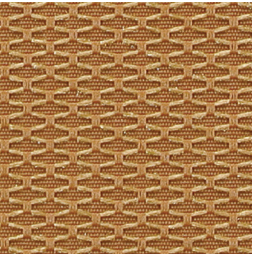
Orange
040



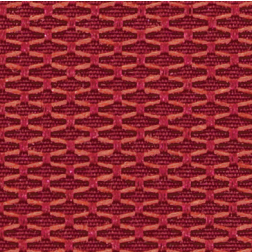
Tangerine
050



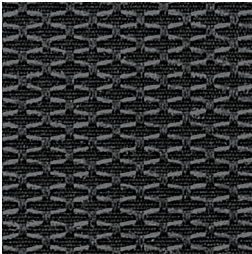
Taupe
020



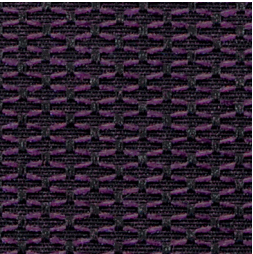
Gold
030



Cherry
060



Onyx
100



Plum
101

Specifications

Content	100% pre-consumer recycled polyester
Weight	9.7 ± 1.0 oz./lin. yd.
Width	54" min. useable
Repeat	.25" vertical .5" horizontal

Cleaning Code

Standard Care Label W-S. Clean with water based cleaning agents, foam or pure, water free solvents. Vacuuming or light brushing is recommended to prevent dust and soil buildup.

Bleach Cleanable - May be cleaned with a 10% bleach-to-water solution. Rinse well after cleaning. May also be disinfected with hydrogen peroxide, alcohol, and quaternary ammonium (quat) based cleaners.

Miscellaneous

Proudly woven in North America supporting our local communities.






Application testing of this product is recommended. Colors may vary between dye lots. This is a directional fabric.

Visit guilfordofmaine.com for samples.



 This pattern is included in the underwriters laboratory panel fabric recognition program. Additional testing of this U.L. recognized component fabric is not required on approved panels from participating manufacturers.

*Certification Marks owned by the Association for Contract Textiles, Inc.

Performance

-  Colorfastness to Light (AATCC 16.3 Option 3)
Grade 4 min. at 40 hours
-  Colorfastness to Crocking (AATCC 8)
Grade 4 min. dry & Grade 3 min. wet
-  Breaking Strength (ASTM D5034)
225 lbf min. warp and 175 lbf min. fill
- Seam Slippage (ASTM D4034)
70 lbf min. warp and 50 lbf min. fill
- Pilling Resistance (ASTM D3511)
Class 4 min.
-  Flammability
**CA Technical Bulletin 117-2013 Section 1
ASTM E84 Class I or A**
-  ^{*} Abrasion (ASTM D4157)
35,000 double rubs min. cotton duck

Sustainability

-  **100% recycled and recyclable**
Terratex is a registered trademark of Duvaltex
-  **facts[™]**
Compliant