

Blink
1577

UPHOLSTERY

UPHOLSTERY

Blink 1577

Specifications

Content	88% pre-consumer recycled polyester 12% post-consumer recycled polyester
Weight	10.4 ± 1.0 oz./lin. yd.
Width	54" min. useable
Repeat	.23" vertical .35" horizontal

Cleaning Code

Standard Care Label W-S. Clean with water based cleaning agents, foam or pure, water free solvents. Vacuuming or light brushing is recommended to prevent dust and soil buildup. May also be disinfected with hydrogen peroxide, alcohol, and quaternary ammonium (quat) based cleaners.






Miscellaneous

Proudly woven in North America supporting our local communities.


Application testing of this product is recommended. Colors may vary between dye lots. This is a directional fabric.

Visit guilfordofmaine.com for samples.

Performance

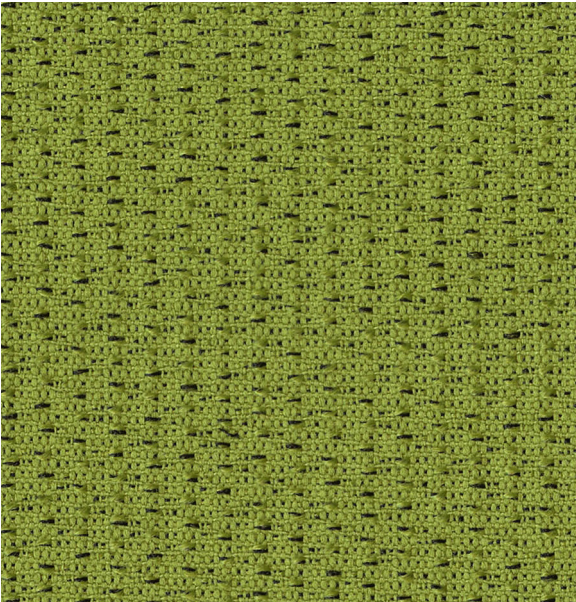
	Colorfastness to Light (AATCC 16.3 Option 3) Grade 4 min. at 40 hours
	Colorfastness to Crocking (AATCC 8) Grade 4 min. dry & Grade 3 min. wet
	Breaking Strength (ASTM D5034) 210 lbf warp and 110 lbf fill
	Seam Slippage (ASTM D4034) 60 lbf warp and 35 lbf fill
	Pilling Resistance (ASTM D3511) Class 4
	Flammability CA Technical Bulletin 117-2013 Section 1
	Abrasion (ASTM D4157) 100,000 double rubs cotton duck

Sustainability

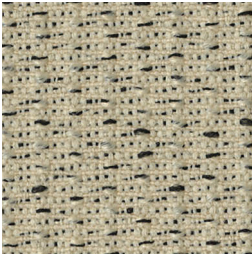
 100% recycled and recyclable
Terratex is a registered trademark of Duvaltex

 facts™
Gold

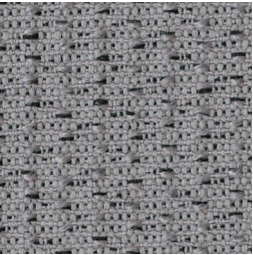
*Certification Marks owned by the Association for Contract Textiles, Inc.



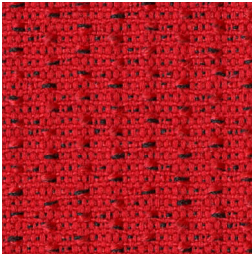
Spring
6271



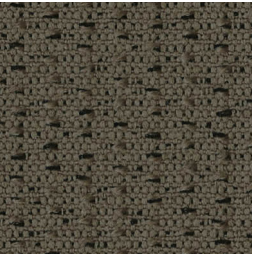
Glimmer
6272



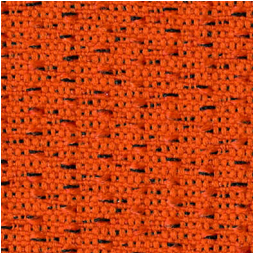
Laser
6274



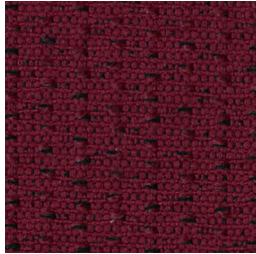
Flare
6277



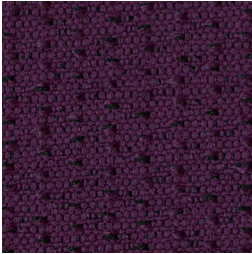
Glint
6276



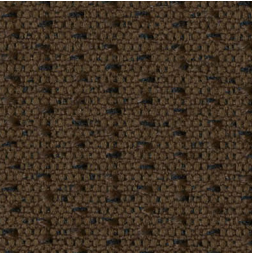
Flash
6273



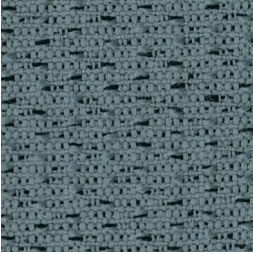
Ember
6281



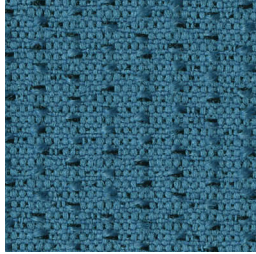
Nova
6282



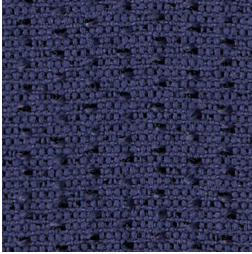
Eclipse
6280



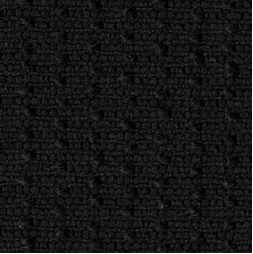
Splash
6275



Wave
6279



Moonlight
6278



Meteor
6283