

# Cadence 5595

UPHOLSTERY

## Cadence 5595

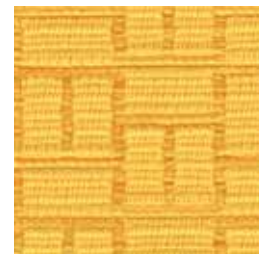
UPHOLSTERY



**Turquoise**  
1442



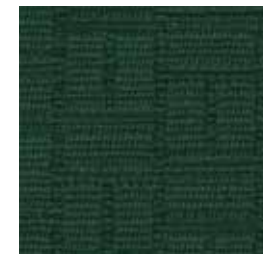
**Pearl**  
1431



**Citrine**  
1435



**Peridot**  
1440



**Jade**  
1441



**Opal**  
1432



**Topaz**  
1436



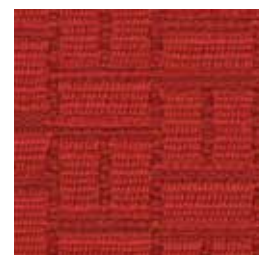
**Ruby**  
1438



**Sapphire**  
1443



**Quartz**  
1433



**Coral**  
1437



**Garnet**  
1439



**Lapis**  
1444



**Jet**  
1434

### Specifications

Content	90% polyester 6% pre-consumer recycled polyester 4% post-consumer recycled polyester
Weight	12.9 ± 1.0 oz./lin. yd.
Width	54" min. useable
Repeat	1.5" vertical   2" horizontal
Backing	acrylic backcoating
Treatment	stain repellent

### Cleaning Code

Standard Care Label W-S. Clean with water based cleaning agents, foam or pure, water free solvents. Vacuuming or light brushing is recommended to prevent dust and soil buildup. May also be disinfected with hydrogen peroxide, alcohol, and quaternary ammonium (quat) based cleaners.


### Miscellaneous

Proudly woven in North America supporting our local communities.


Application testing of this product is recommended. Colors may vary between dye lots. This is a directional fabric.

Visit [guilfordofmaine.com](http://guilfordofmaine.com) for samples.


### Performance

-  Colorfastness to Light (AATCC 16.3 Option 3)  
**Grade 4 min. at 40 hours**

---

-  Colorfastness to Crocking (AATCC 8)  
**Grade 4 min. dry & Grade 3 min. wet**

---

-  Breaking Strength (ASTM D5034)  
**200 lbf warp and 155 lbf fill**


---

- Seam Slippage (ASTM D4034)  
**100 lbf warp and 45 lbf fill**


---

- Pilling Resistance (ASTM D3511)  
**Class 4**

---

-  Flammability  
**CA Technical Bulletin 117-2013 Section 1**

---

-  Abrasion (ASTM D4157)  
**100,000 double rubs cotton duck**

### Sustainability



\*Certification Marks owned by the Association for Contract Textiles, Inc.