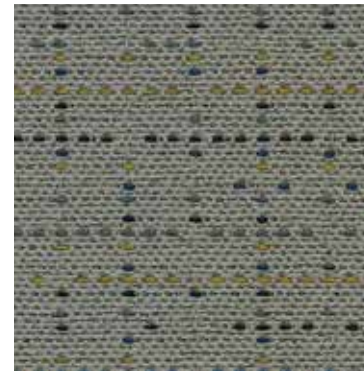


Couture 4858

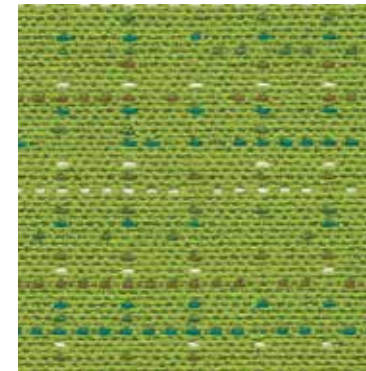
MULTI-PURPOSE
UPHOLSTERY | PANEL

Couture 4858

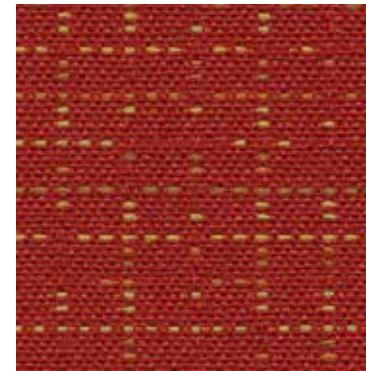
MULTI-PURPOSE
UPHOLSTERY | PANEL



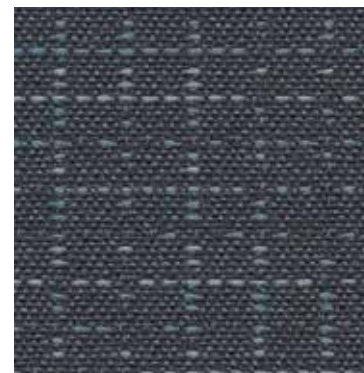
Thimble
1756



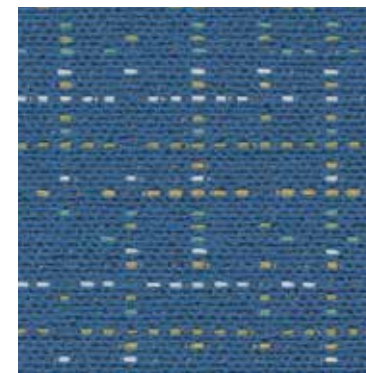
Thread
1755



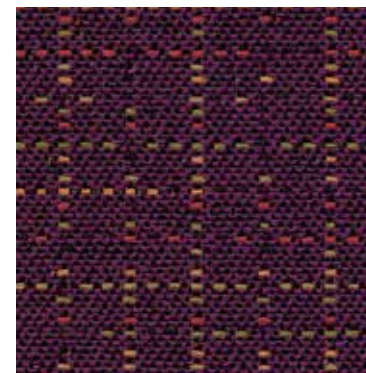
Basting
1751



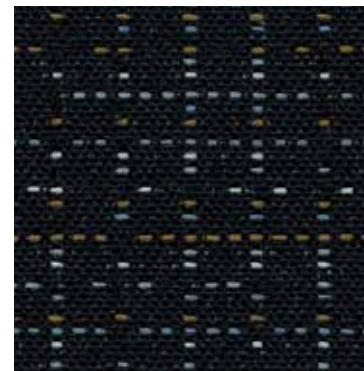
Shears
1750



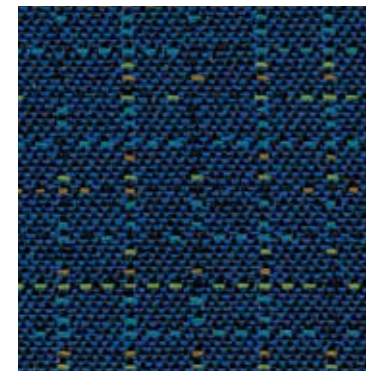
Crewel
1758



Needlework
1753



Seam
1752



Tailor
1757

Specifications

Content	57% post-consumer recycled polyester 25% pre-consumer recycled polyester 18% polyester
Weight	9.2 ± 1.0 oz./lin. yd.
Width	54" min. useable
Repeat	14.5" vertical 14" horizontal
Backing	acrylic backcoating
Treatment	stain repellent

Cleaning Code

Standard Care Label W-S. Clean with water based cleaning agents, foam or pure, water free solvents. Vacuuming or light brushing is recommended to prevent dust and soil buildup. May also be disinfected with hydrogen peroxide, alcohol, and quaternary ammonium (quat) based cleaners.

Miscellaneous

Proudly woven in North America supporting our local communities.

Application testing of this product is recommended. Colors may vary between dye lots. This is a directional fabric.


Visit guilfordofmaine.com for samples.


 This pattern is included in the underwriters laboratory panel fabric recognition program. Additional testing of this U.L. recognized component fabric is not required on approved panels from participating manufacturers.

*Certification Marks owned by the Association for Contract Textiles, Inc.

Performance


 Colorfastness to Light (AATCC 16.3 Option 3)
Grade 4 min. at 40 hours


 Colorfastness to Crocking (AATCC 8)
Grade 4 min. dry & Grade 3 min. wet

 Breaking Strength (ASTM D5034)
115 lbf warp and 85 lbf fill

Seam Slippage (ASTM D4034)
55 lbf warp and 60 lbf fill

Pilling Resistance (ASTM D3511)
Class 5

 Flammability
**CA Technical Bulletin 117-2013 Section 1
ASTM E84 Class I or A**

 * Abrasion (ASTM D4157)
100,000 double rubs cotton duck

Sustainability

 facts[™]
Gold