

# Evoked 9883

UPHOLSTERY

UPHOLSTERY

## Evoked 9883



**Natural**  
3053



**Pear**  
3051



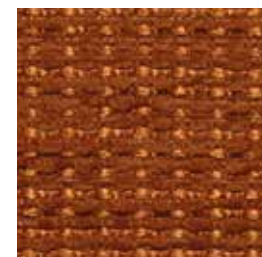
**Flax**  
3052



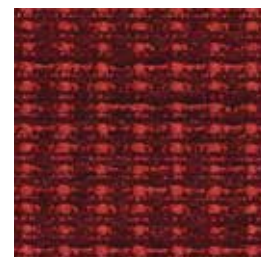
**Breeze**  
3010



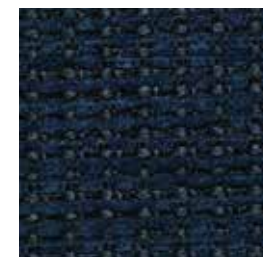
**Grey Mist**  
3050



**Terracotta**  
3030



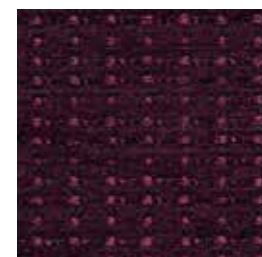
**Cerise**  
3040



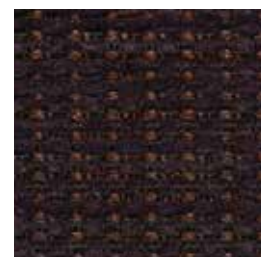
**Pacific**  
3063



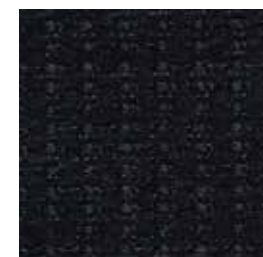
**Graphite**  
3060



**Iris**  
3061



**Mahogany**  
3062



**Noir**  
3064

### Specifications

Content	<b>47% polyester</b> <b>29% pre-consumer recycled polyester</b> <b>24% post-consumer recycled polyester</b>
Weight	<b>15.1 ± 1.0 oz./lin. yd.</b>
Width	<b>54" min. useable</b>
Repeat	<b>.375" vertical   .1875" horizontal</b>
Backing	<b>acrylic backcoating</b>

### Cleaning Code

Standard Care Label W-S. Clean with water based cleaning agents, foam or pure, water free solvents. Vacuuming or light brushing is recommended to prevent dust and soil buildup.

**Bleach Cleanable** - May be cleaned with a 10% bleach-to-water solution. Rinse well after cleaning. May also be disinfected with hydrogen peroxide, alcohol, and quaternary ammonium (quat) based cleaners.


### Miscellaneous


Proudly woven in North America supporting our local communities.


Application testing of this product is recommended. Colors may vary between dye lots. This is a directional fabric.

Visit [guilfordofmaine.com](http://guilfordofmaine.com) for samples.

### Performance

 Colorfastness to Light (AATCC 16.3 Option 3)  
**Grade 4 min. at 40 hours**


 Colorfastness to Crocking (AATCC 8)  
**Grade 4 min. dry & Grade 3 min. wet**

 Breaking Strength (ASTM D5034)  
**130 lbf warp and 190 lbf fill**

Seam Slippage (ASTM D4034)  
**60 lbf warp and 40 lbf fill**

Pilling Resistance (ASTM D3511)  
**Class 4 min.**

 Flammability  
**CA Technical Bulletin 117-2013 Section 1**

 **A\*** Abrasion (ASTM D4157)  
**100,000 double rubs cotton duck**

\*Certification Marks owned by the Association for Contract Textiles, Inc.