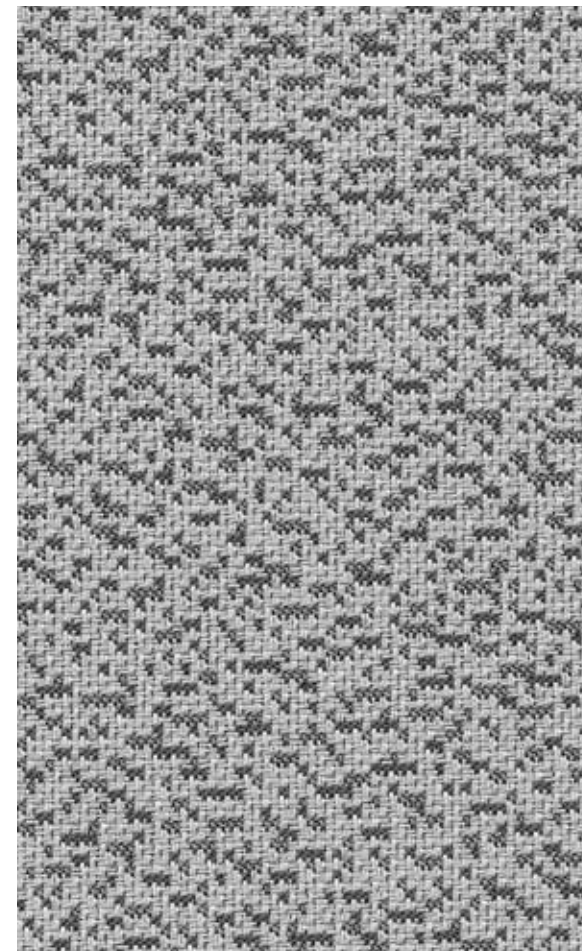
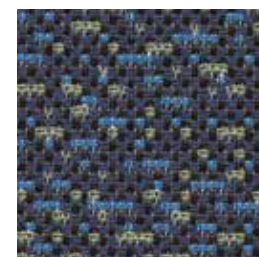


Excerpt 9532/9533

UPHOLSTERY



Zebra
9532-5020



Navy
9533-5041



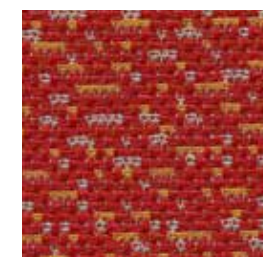
Charcoal
9533-5040



Steel
9532-5010



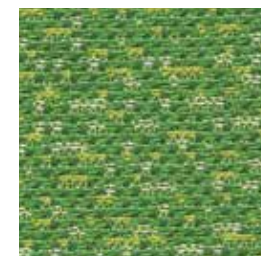
Nougat
9533-5030



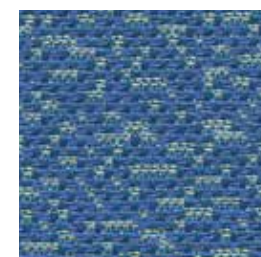
Crimson
9533-5050



Morel
9533-5031



Lawn
9533-5070



Royal
9533-5060

Excerpt 9532/9533

UPHOLSTERY

Specifications

Content	78% post-consumer recycled polyester 22% pre-consumer recycled polyester
Weight	12.9 ± 1.0 oz./lin. yd.
Width	54" min. useable
Repeat	2.75" vertical 4.75" horizontal
Backing	acrylic backcoating
Treatment	BLOCKaide® stain repellent

Cleaning Code

Standard Care Label W-S. Clean with water based cleaning agents, foam or pure, water free solvents. Vacuuming or light brushing is recommended to prevent dust and soil buildup.

Bleach Cleanable - May be cleaned with a 10% bleach-to-water solution. Rinse well after cleaning. May also be disinfected with hydrogen peroxide, alcohol, and quaternary ammonium (quat) based cleaners.


Miscellaneous


Proudly woven in North America supporting our local communities.


Application testing of this product is recommended. Colors may vary between dye lots. This is a directional fabric.

Visit guilfordofmaine.com for samples.

Performance

 Colorfastness to Light (AATCC 16.3 Option 3)
Grade 4 min. at 40 hours

 Colorfastness to Crocking (AATCC 8)
Grade 4 min. dry & Grade 3 min. wet

 Breaking Strength (ASTM D5034)
175 lbf warp and 200 lbf fill

Seam Slippage (ASTM D4034)
60 lbf warp and 50 lbf fill

Pilling Resistance (ASTM D3511)
Class 4 min.

 Flammability
CA Technical Bulletin 117-2013 Section 1

 **A*** Abrasion (ASTM D4157)
100,000 double rubs cotton duck

*Certification Marks owned by the Association for Contract Textiles, Inc.